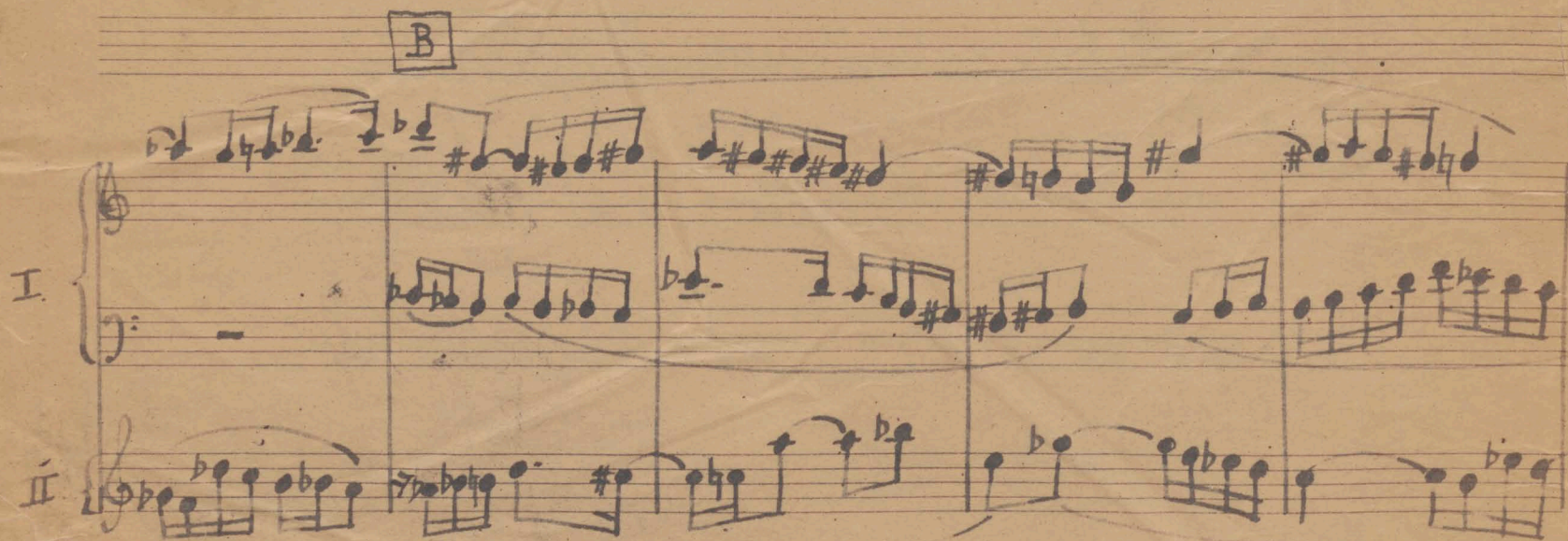
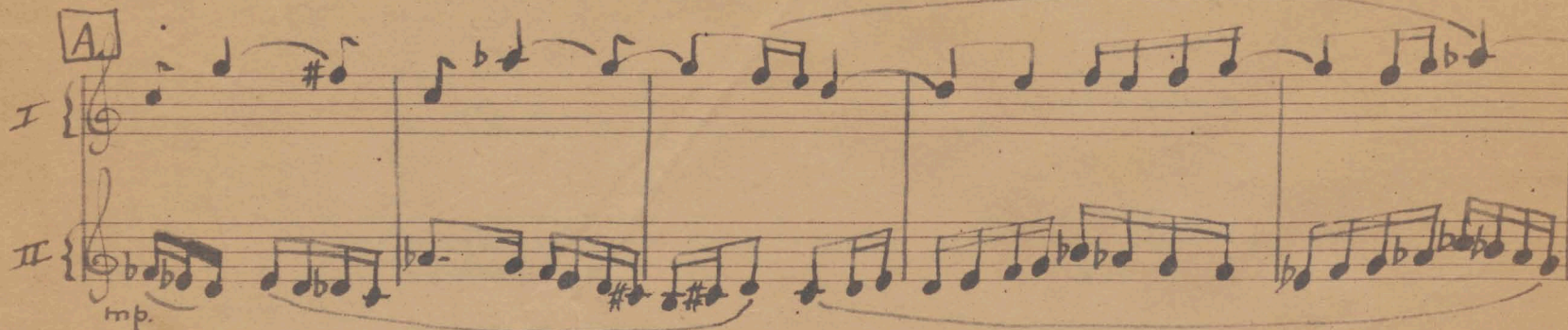
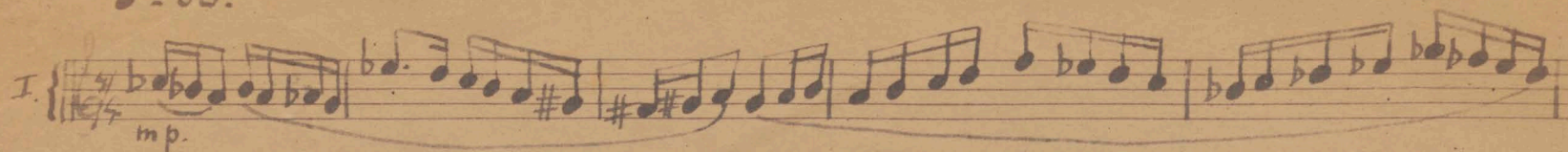


Sonate.

Kors Monster.

$\text{♩} = 80.$



Duur: 4 minuten.



I

II

*sempre con 8va bassa.*

I

II

*sempre stacc.*

*pp*

I

II

I

II

*loco*



**F**

Handwritten musical score for system F, measures 1-4. The first staff contains a series of eighth and sixteenth notes with various accidentals. The second staff has a similar rhythmic pattern. Dynamics include *p* (piano) and *mf* (mezzo-forte).

**G**

8va

*pp*

*mf*

sono va bassa sempre

sempre 8va

Handwritten musical score for system G, measures 5-8. The first staff has a melodic line with a *pp* (pianissimo) marking. The second staff has a more complex rhythmic pattern. Dynamics include *pp* and *mf*. Performance instructions include "sono va bassa sempre" and "sempre 8va".

**H**

cresc.

8va

loco

cresc

*pp*

sono va bassa.

Handwritten musical score for system H, measures 9-12. The first staff has a melodic line with a *cresc.* (crescendo) marking. The second staff has a more complex rhythmic pattern. Dynamics include *pp* (pianissimo). Performance instructions include "loco" and "sono va bassa."



*8va* *3* *loco*

I

ff

loc con 16va 8va

II

con 8va bassa

K

I

mf

II

mp

I

pp

mp

II

pp



N.

I *p leggiero.*

II *p leggiero*

O

I

II

*p*

φ

I

II *p leggiero.*

R

I

II



I

II

con 8va bassa

loco

mp

pp

L

I

II

mp

mf

more

M

8va

I

II

8va

loco



8va

Handwritten musical score for two staves, labeled I and II. The notation includes various notes, rests, and accidentals (sharps, flats, naturals). Staff I features a treble clef and a key signature of one flat. Staff II features a bass clef and a key signature of one flat. The music is written in a style characteristic of 19th-century manuscript notation.

Loco V ♩ = 100.

Handwritten musical score for two staves, labeled I and II. The notation includes various notes, rests, and accidentals. Staff I features a treble clef and a key signature of one flat. Staff II features a bass clef and a key signature of one flat. The music is written in a style characteristic of 19th-century manuscript notation.

Handwritten musical score for two staves, labeled I and II. The notation includes various notes, rests, and accidentals. Staff I features a treble clef and a key signature of one flat. Staff II features a bass clef and a key signature of one flat. The music is written in a style characteristic of 19th-century manuscript notation.



**I**

**II**

**S**

Handwritten musical score for the first system. It consists of two staves, labeled I and II. Staff I contains a complex melodic line with many accidentals and a section marker 'S' in a box. Staff II contains a more rhythmic accompaniment. Dynamic markings include 'p' (piano) and '7' (seventh). There are also some handwritten annotations and arrows.

**I**

**II**

*8va*

*loco*

*pp*

*mp*

Handwritten musical score for the second system. It consists of two staves, labeled I and II. Staff I has a melodic line with many accidentals and a section marker 'S' in a box. Staff II has a more rhythmic accompaniment. Dynamic markings include 'pp' (pianissimo), 'mp' (mezzo-piano), and '8va' (octave). The word 'loco' is written above the staff. There are also some handwritten annotations and arrows.

**I**

**II**

**T**

*8va*

*loco*

*pp*

Handwritten musical score for the third system. It consists of two staves, labeled I and II. Staff I has a melodic line with many accidentals and a section marker 'T' in a box. Staff II has a more rhythmic accompaniment. Dynamic markings include 'pp' (pianissimo) and '8va' (octave). The word 'loco' is written above the staff. There are also some handwritten annotations and arrows.



Handwritten musical notation on a single staff, featuring various notes, rests, and dynamic markings such as *pp* and *mp*. The notation includes complex rhythmic patterns and accidentals. A large bracket on the right side indicates a section labeled **I** and **II**.

Handwritten musical notation on a single staff, featuring various notes, rests, and dynamic markings such as *pp* and *mp*. The notation includes complex rhythmic patterns and accidentals. A large bracket on the right side indicates a section labeled **I** and **II**.

Handwritten musical notation on a single staff, featuring various notes, rests, and dynamic markings such as *pp* and *mp*. The notation includes complex rhythmic patterns and accidentals. A large bracket on the right side indicates a section labeled **I** and **II**. The text *sempre stacc.* is written above the staff.

Handwritten musical notation on a single staff, featuring various notes, rests, and dynamic markings such as *pp* and *mp*. The notation includes complex rhythmic patterns and accidentals. A large bracket on the right side indicates a section labeled **I** and **II**. The text *sempre con 8va bassa* is written above the staff.