

Han Neer Coolhaas.

Sonate

voor
violoneello en piano.

Kors Monster.

(1944)

Andante.

cello.

piano.

Una
corda.

Handwritten musical score system 1. It features a treble clef staff with a key signature of one sharp (F#) and a common time signature. The music includes notes, rests, and dynamic markings such as *pp* and *rit.*. A circled measure number "25" is present at the beginning. There are also some handwritten annotations like "con sord." and "ped" below the staff.

Handwritten musical score system 2. It features a treble clef staff with a key signature of one sharp (F#) and a common time signature. The music includes notes, rests, and dynamic markings such as *pp* and *rit.*. A circled measure number "30" is present at the beginning. There are also some handwritten annotations like "p", "3", and "3" above the staff.

Handwritten musical score system 3. It features a treble clef staff with a key signature of one sharp (F#) and a common time signature. The music includes notes, rests, and dynamic markings such as *pp*, *mp*, and *p.*. A circled measure number "40" is present at the beginning. There are also some handwritten annotations like "acc." and "pizz." above the staff.

Handwritten musical score system 4. It features a treble clef staff with a key signature of one sharp (F#) and a common time signature. The music includes notes, rests, and dynamic markings such as *pp*, *f*, and *fp*. A circled measure number "5" is present at the beginning. There are also some handwritten annotations like "cresc." and "pizzato" above the staff.

10

f repr.
poco f.
p.

20

decrease.
dim.
p.

25

p.
mp.
mf.

30

f.
poco f.
f.
cresc.
sfz.
p.

con sord!!
(1) allan de basnoten

35 3 40

pp ma ritmico
con ova bassa (1)

45

loco leggiero

50

mf
p

Andante 55

ritardando
espr.
pp.

(1) alle note

(60)

pp. cresc.

(65) (70)

sfz. pp. cresc.

(75)

poco f. p. b p. mp. cresc. p. a. p.

(80)

ff. a tempo e marcato

85

90

Handwritten musical score system 1, measures 85-90. It features a grand staff with piano and bass clefs. The music consists of dense chords and arpeggiated figures. Dynamics include *p* and *pp*. A *rit.* marking is present in measure 88.

Handwritten musical score system 2, measures 91-96. It continues the grand staff notation. Dynamics include *pp*, *cresc. p. a. p.*, and *cresc. p. a. p.*. There are some markings like *sfz* and *rit.*.

Handwritten musical score system 3, measures 97-102. It features a grand staff with piano and bass clefs. Dynamics include *con ssa f/*, *loco*, *con ssa bassa mp cresc.*, and *f con ssa bassa cresc.*. A *molto espr.* marking is present in measure 98.

Handwritten musical score system 4, measures 103-108. It features a grand staff with piano and bass clefs. Dynamics include *ff.*, *loco*, *mp*, *piu. sfz.*, and *pp.*. A *rit.* marking is present in measure 104. The tempo marking *meno vivo e accel* is written across measures 103-104.

(1) de s ondesta noten
 (2) alle noten.?

molto
p

II. Adagio.

Senza rigore (non troppo)

cello solo.

cello.

piano.

Handwritten musical score for the first system. It consists of a cello line (top staff) and a piano accompaniment (bottom two staves). The piano part includes the instruction "con duolo" and a dynamic marking "mf." (mezzo-forte). The music is in a minor key and features complex rhythmic patterns and accidentals.

(70)

Handwritten musical score for the second system, continuing the piano accompaniment. It features various dynamics and articulations, including a "p." (piano) marking. The notation includes slurs and accents.

(75)

Handwritten musical score for the third system. It includes the instruction "con sordina: - loco" (with mutes, ad libitum) and "rallando e dim." (ritardando and decrescendo). The piano part shows a gradual change in dynamics and tempo.

con sordina: - loco rallando e dim.

Handwritten musical score for the fourth system. It features the instruction "p. espr." (piano, espressivo) and a dynamic marking "pp." (pianissimo). The music concludes with a final cadence and a fermata.

p. espr.

pp.

de 3 de

caldo, molto espr.
mf. *p*
cresc. p. a. p.

cresc. ma non troppo
ma non troppo. con s'ra bassa (11)
meno forte
loco

dim.
loco p. *mf* *mf*

p. *pp.*

(11) alle Anon.

Handwritten musical score, first system. It features a treble clef staff with a key signature of one flat and a 7/4 time signature. The music includes dynamic markings such as *pp.* and *quasi niente amore.*, and a tempo marking *a Tempo.* There are also performance instructions like *pp. elevato* and *h.* The notation includes various note values and rests.

Handwritten musical score, second system. It continues with the treble clef staff. The tempo is marked *Rento* and includes the instruction *con duolo*. Dynamic markings include *rit.*, *molto tranqu.*, and *sepi.*. The notation shows complex rhythmic patterns and some triplets.

Handwritten musical score, third system. It features a treble clef staff with a key signature of one flat and a 2/4 time signature. The music includes dynamic markings like *pp.* and *ppad.*. There are also performance instructions such as *rit.* and *largo*. The notation includes various note values and rests.

Handwritten musical score, fourth system. It features a treble clef staff with a key signature of one flat and a 4/4 time signature. The music includes dynamic markings like *pp.*, *ppp.*, and *pppp.*. There are also performance instructions such as *ped.* and *ppp.*. The notation includes various note values and rests.

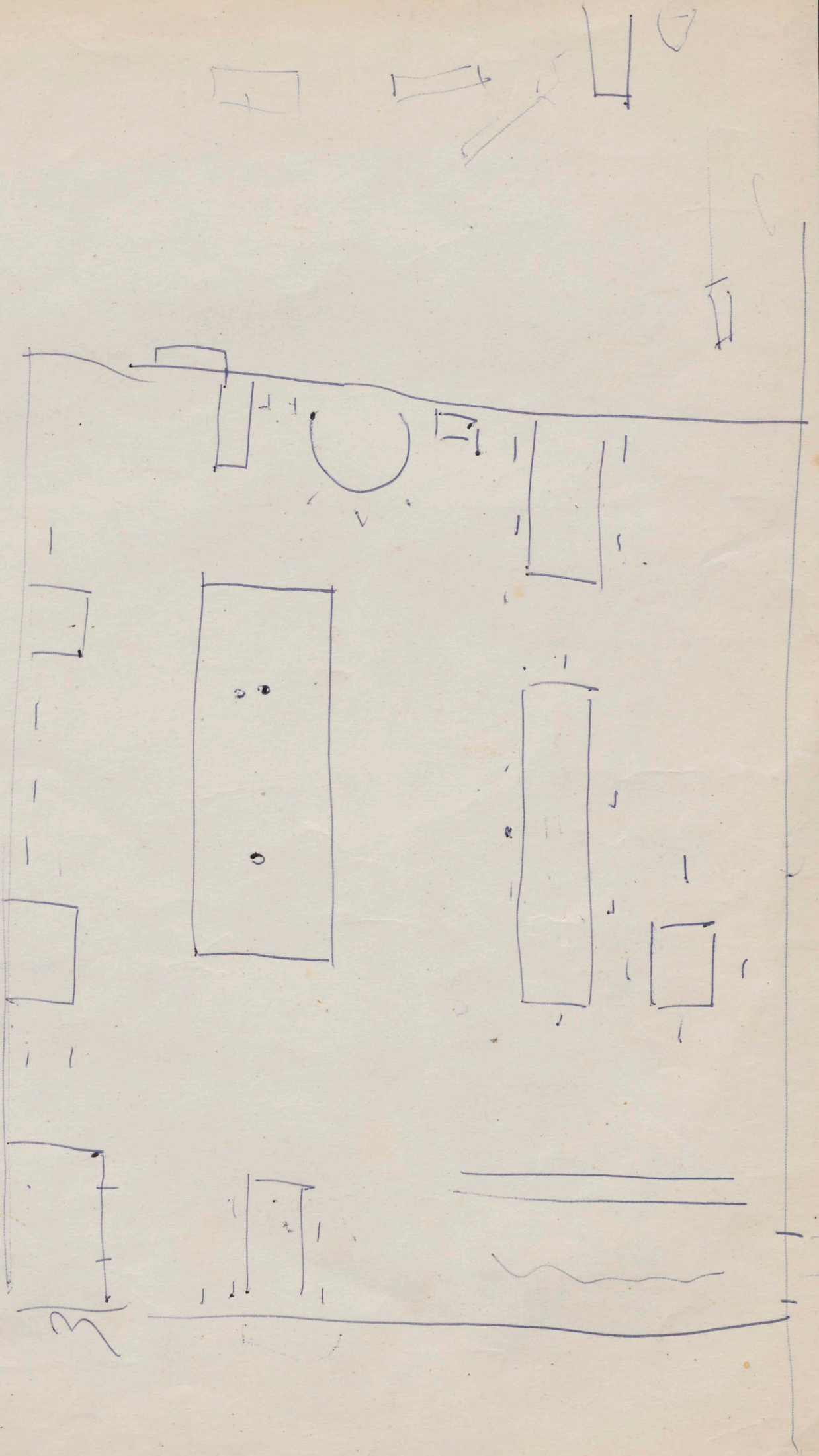
Dowdell
November 1944.

Romance

U.C.

Sonate voor Violoncello en piano
Aan Noor Coolhaas.

1944.



Sonate

voor violonecello en piano.

Kors Monster.

(1944)

Andante.

cello.

piano.

Handwritten musical score for the first system, measures 1-5. The cello part begins with a rest, followed by a triplet of eighth notes (D4, E4, F4) and a half note (G4). The piano accompaniment starts with a piano (pp) dynamic, featuring a steady eighth-note accompaniment in the right hand and a bass line in the left hand. Measure 5 is circled with the number 5.

Handwritten musical score for the second system, measures 6-10. The cello part continues with a half note (G4) and a quarter note (A4). The piano accompaniment features a 'pin p' dynamic and includes a section marked 'espr.' (espressivo) with a triplet of eighth notes. The right hand has a melodic line, and the left hand has a bass line. Measure 10 is circled with the number 10.

Handwritten musical score for the third system, measures 11-15. The cello part has a quarter rest followed by a triplet of eighth notes (Bb4, C5, D5). The piano accompaniment features a piano (p) dynamic and includes a section marked 'f.' (forte). Measure 15 is circled with the number 15.

Handwritten musical score for the fourth system, measures 16-20. The cello part has a quarter rest followed by a triplet of eighth notes (E4, F4, G4). The piano accompaniment features a piano (p) dynamic and includes a section marked 'rit. molto' (ritardando molto) and 'hang.' (hangover). Measure 20 is circled with the number 20. The system concludes with a 'ped.' (pedal) marking.

Handwritten musical score system 1. It consists of three staves: a top staff with a treble clef and a key signature of one sharp (F#), and two lower staves with a grand staff (treble and bass clefs) and the same key signature. The music begins with a *pp* dynamic marking. At measure 25, there is a circled number "25" and the instruction "rit." with a dashed line. The word "con sord." is written above the middle staff. The word "ped" is written below the bottom staff. The system concludes with a *p* dynamic marking.

Handwritten musical score system 2. It consists of three staves: a top staff with a treble clef and a key signature of two flats (Bb, Eb), and two lower staves with a grand staff and the same key signature. The system begins with a circled number "30" and a *pp* dynamic marking. The instruction "rit" is written above the top staff. At measure 32, the instruction "piu vivo." is written above the top staff. The system concludes with a *p* dynamic marking.

Handwritten musical score system 3. It consists of three staves: a top staff with a treble clef and a key signature of two flats (Bb, Eb), and two lower staves with a grand staff and the same key signature. The system begins with a circled number "40" and a *p* dynamic marking. The instruction "pizz." is written above the top staff. The word "sec." is written above the top staff. The word "f." is written above the middle staff. The word "mp" is written above the bottom staff. The system concludes with a *p* dynamic marking.

Handwritten musical score system 4. It consists of three staves: a top staff with a treble clef and a key signature of one sharp (F#), and two lower staves with a grand staff and the same key signature. The system begins with a circled number "5". The word "cresc." is written below the bottom staff. The system concludes with a *fp* dynamic marking.

Handwritten musical score, first system. It consists of three staves: a single treble clef staff at the top, and a grand staff (treble and bass clefs) below. The music is in 3/4 time. Measure numbers 10, 12, and 15 are circled. Dynamics include *f espr.*, *poco f.*, *p.*, and *pp.*. There are various accidentals and slurs throughout the system.

Handwritten musical score, second system. It consists of three staves: a single treble clef staff at the top, and a grand staff below. Measure number 20 is circled. Dynamics include *decrease.*, *din.*, and *sva bassa (1)*. The music features chords and melodic lines with slurs.

Handwritten musical score, third system. It consists of three staves: a single treble clef staff at the top, and a grand staff below. Measure number 25 is circled. Dynamics include *mp.*, *mf.*, *p.*, and *pp.*. The system includes *sva bassa (1)* and various musical notations.

Handwritten musical score, fourth system. It consists of three staves: a single treble clef staff at the top, and a grand staff below. Measure number 30 is circled. Dynamics include *f.*, *poco f.*, *f.*, *pp.*, *sfz.*, and *cresc.*. The system includes *sva bassa (1)* and various musical notations.

con sord!!
 (1) alleen de basnoten

35 +3 40

pp ma ritmico
con 2va bassa (11)

45

loco leggiero

50

mf.

Andante 55

ritardando espr.

pp.

(1) alle note.

(60)

pp. cresc.

3

(65)

sfz. pp. cresc.

2

(75)

poco f. mp. cresc. p.

6

(80)

ff. empalme

3

a tempo e marcato

85

89

pp.

8va

pp

cresc. p. a. p.

cresc. p. b. p.

sfz

100

loco

loco

3

con 8va (1)

loco

con 8va bassa (2)

mf. cresc.

f

con 8va bassa cresc.

105

ff.

loco

loco

3

con 8va bassa

meno vivo e accel

rapide

mp

sfz.

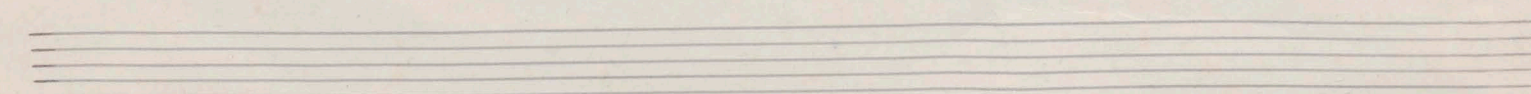
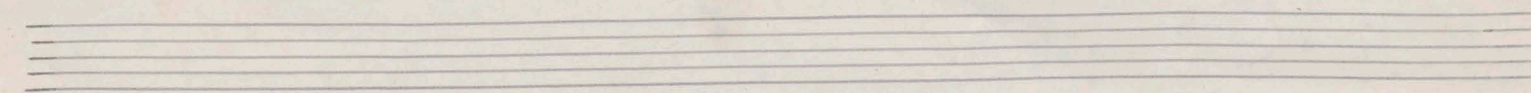
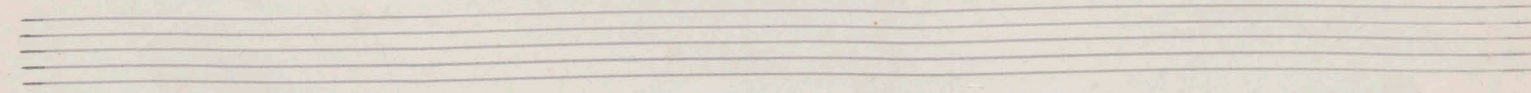
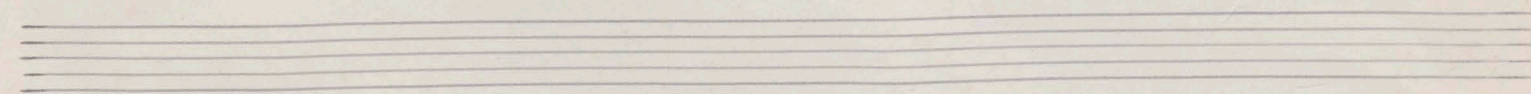
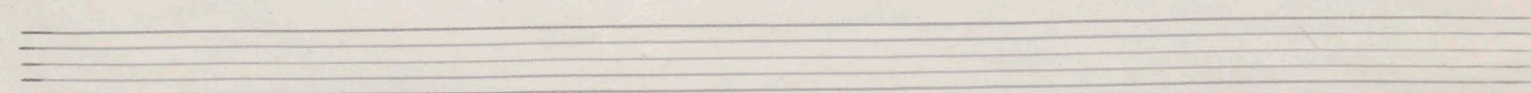
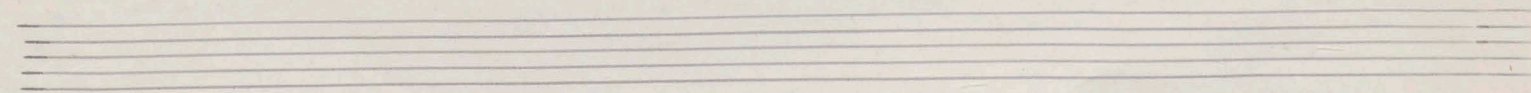
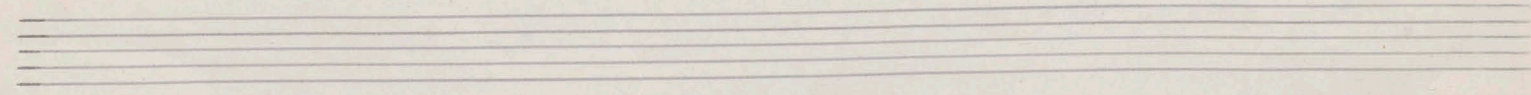
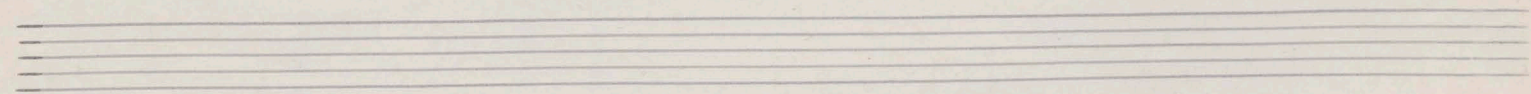
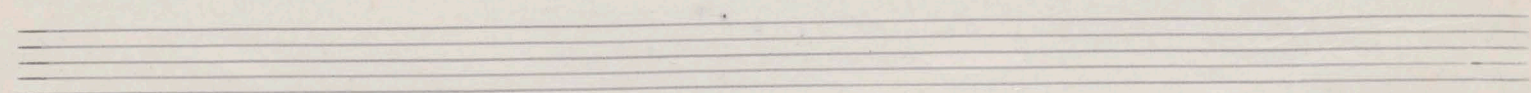
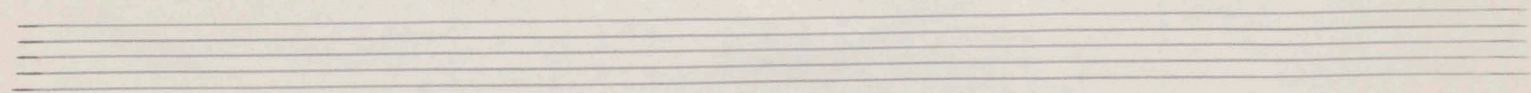
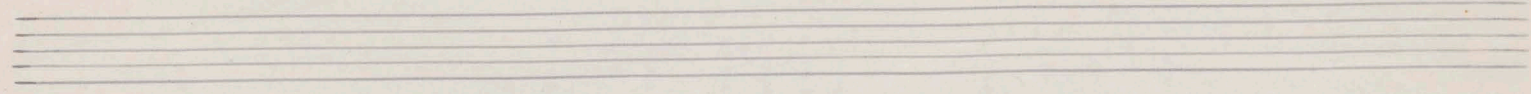
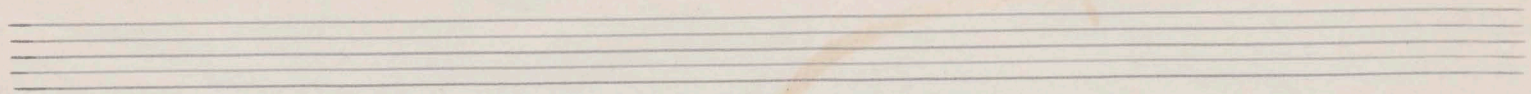
sfz.

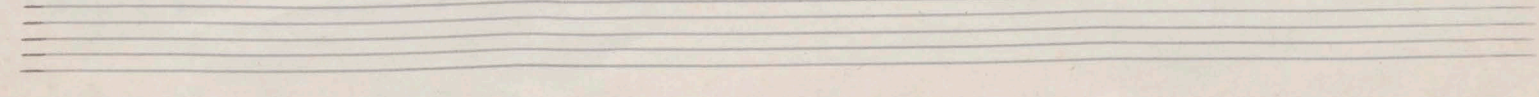
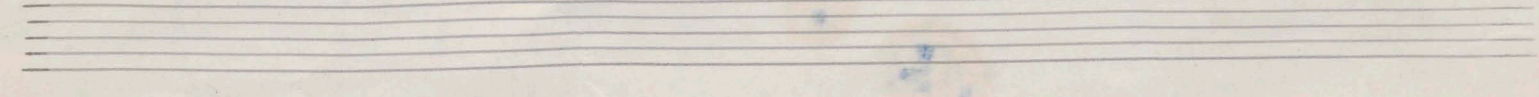
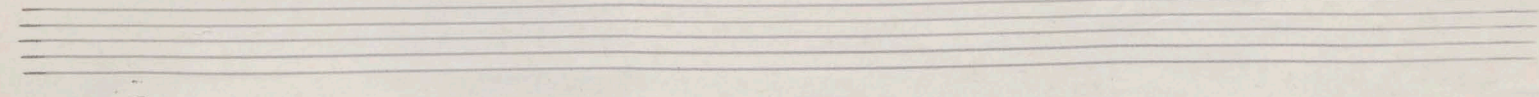
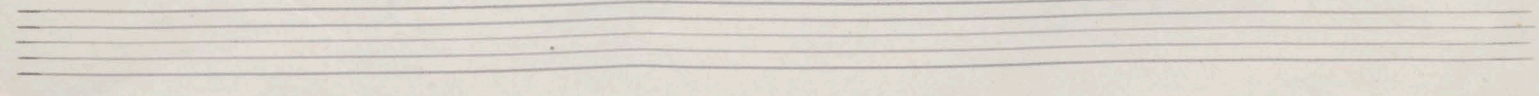
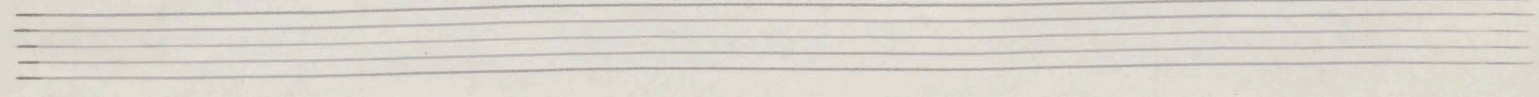
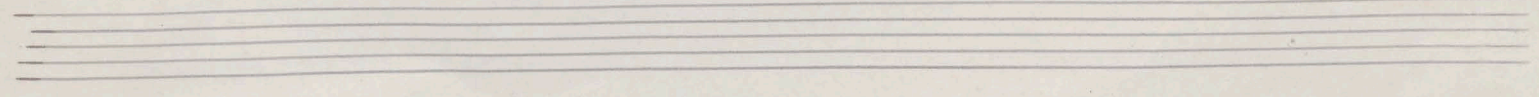
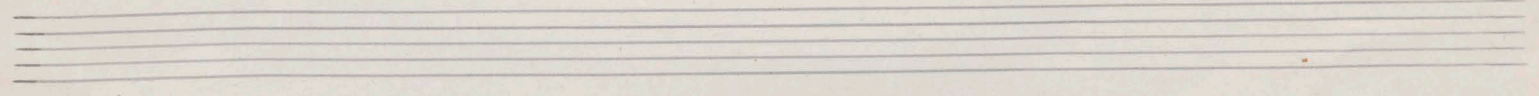
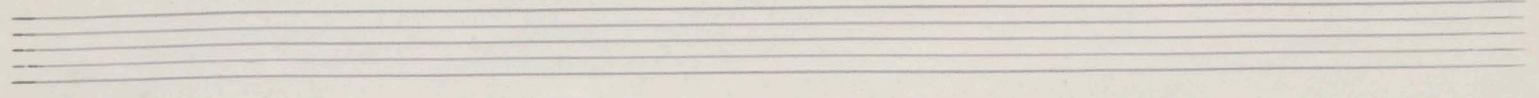
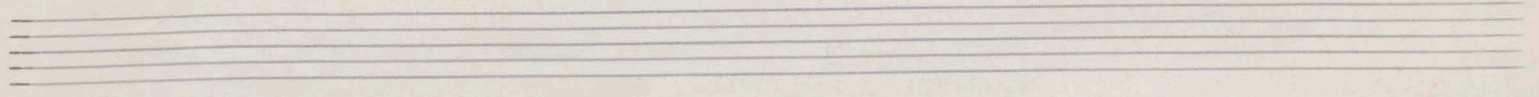
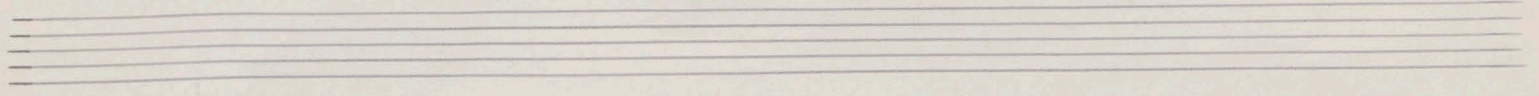
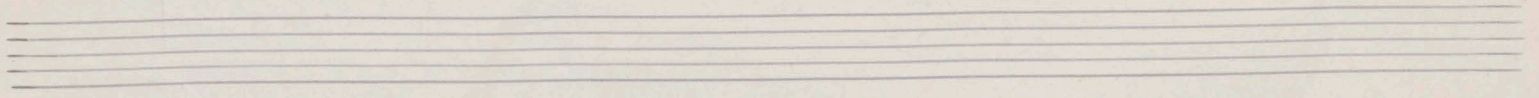
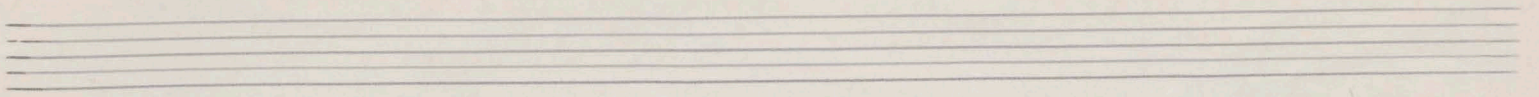
p

molto

pp.

(1) de 3 onderste noten
 (2) alle noten.?





II. Adagio.

Senza rigore (non troppo)

Cello-
solo.

p poco più

meno poco cresc.

più forte subito

p

f cresc. poco a poco al f

mp poco stringendo

f più mosso e molto espr.

(niet te Langzaam) mf energico

mf a tempo

f poco string.

pizz. sonoro arco calando. f pizz. sonoro mf pizz.

cello.

piano.

con duolo

mf.

This system contains the first five measures of the score. The cello part is written in a single staff with a treble clef. The piano part consists of two staves, with the upper staff in treble clef and the lower in bass clef. The piano part includes dynamic markings such as *mf.* and *con duolo*. There are also performance instructions like *tr.* and *3* (triplets). The time signature changes from 9/8 to 2/4 and then to 3/4.

(70)

This system contains measures 6 through 10. The piano part continues with various dynamics and articulations. The cello part has rests in the first two measures. The piano part includes markings like *p.* and *tr.*.

(75)

con 8^{va} bassa.

lento

ritardando e dim.

This system contains measures 11 through 15. The piano part includes the instruction *con 8^{va} bassa.* and *lento*. The cello part has rests. The piano part includes *ritardando e dim.* and *tr.* markings.

p. espr.

pp.

This system contains measures 16 through 20. The piano part includes *p. espr.* and *pp.* markings. The cello part has rests. The piano part includes *tr.* and *pp.* markings.

long
finger

caldo, molto espr
mf.

mf

p

cresc. p. a. p.

cresc. ma non troppo

ma non troppo. con ova bassa (1)

meno forte

ova loco

loco

dim.

loco p.

loco p.

pp.

(1) alle Anon.

h.

pp. quasi niente smorz.

a Tempo.

pp. elevato

h.

rit.

molto tranqu. espr.

hento

con duolo

mp.

mp.

pp.

ped.

largo

Alla Marcia funebre

mp.

pp.

pizz. pp.

ppp.

ped.

Dordrecht
November 1944.

Raymond ter