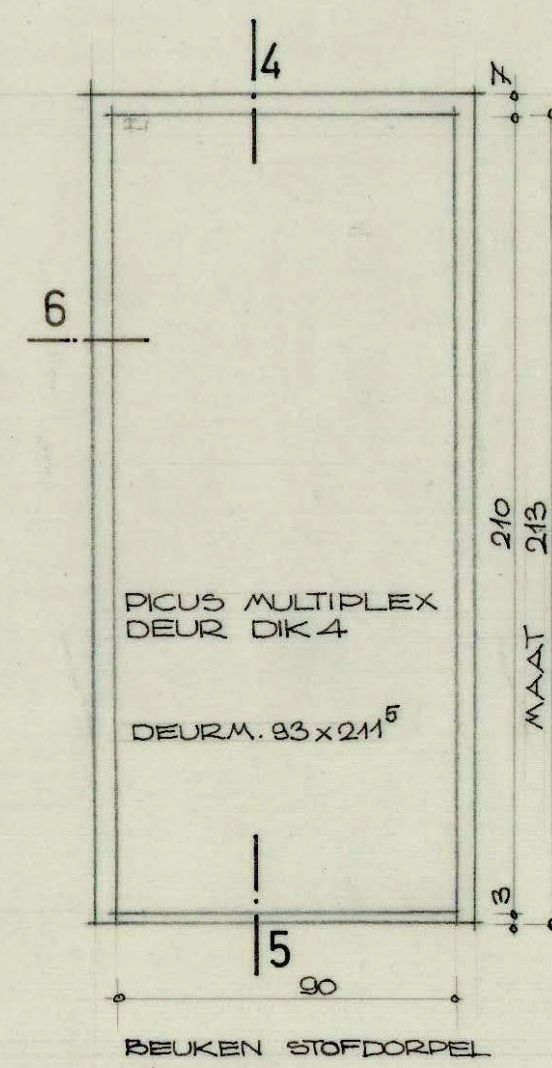
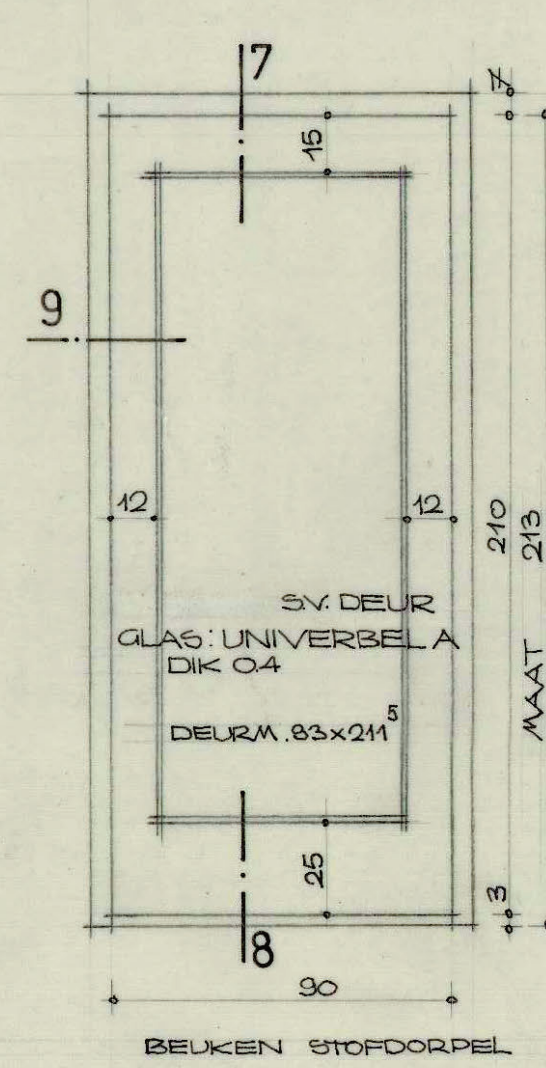


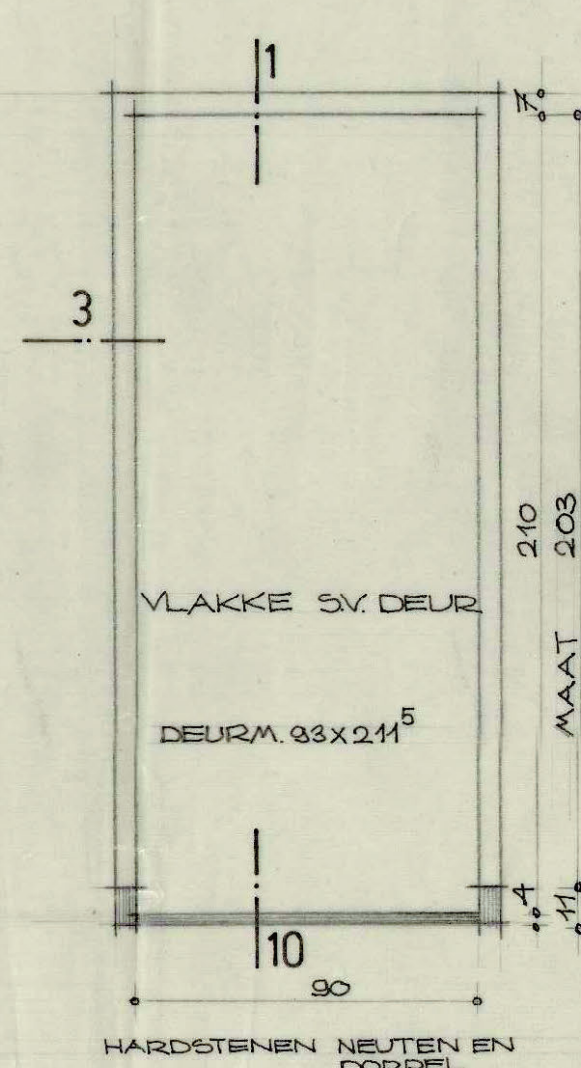
MERK I A 8 ST.



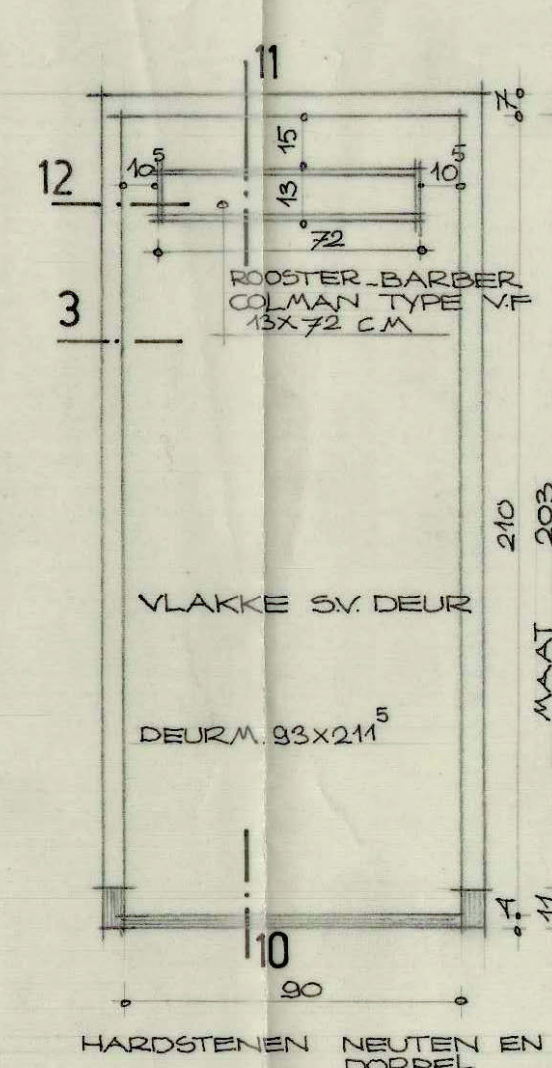
MERK I AX 4 ST.
MET INGELATEN „ADI“
PATENT DEURAFSLUITER



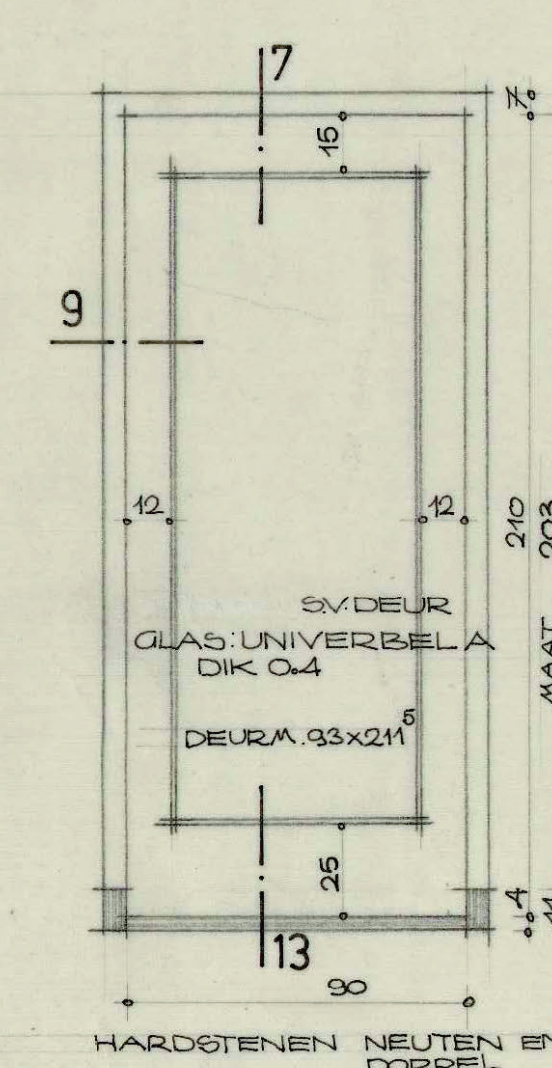
MERK I B 13 ST.



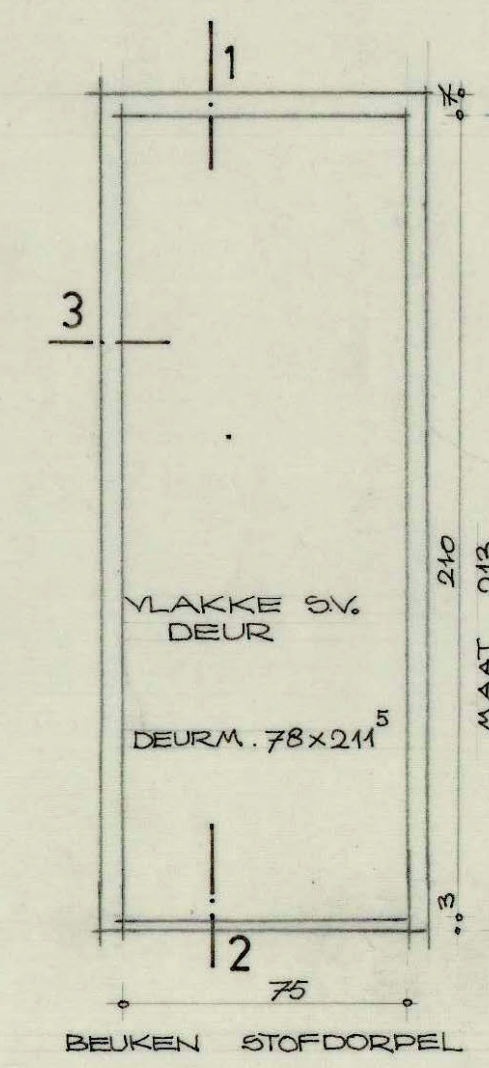
MERK I C 41 ST.



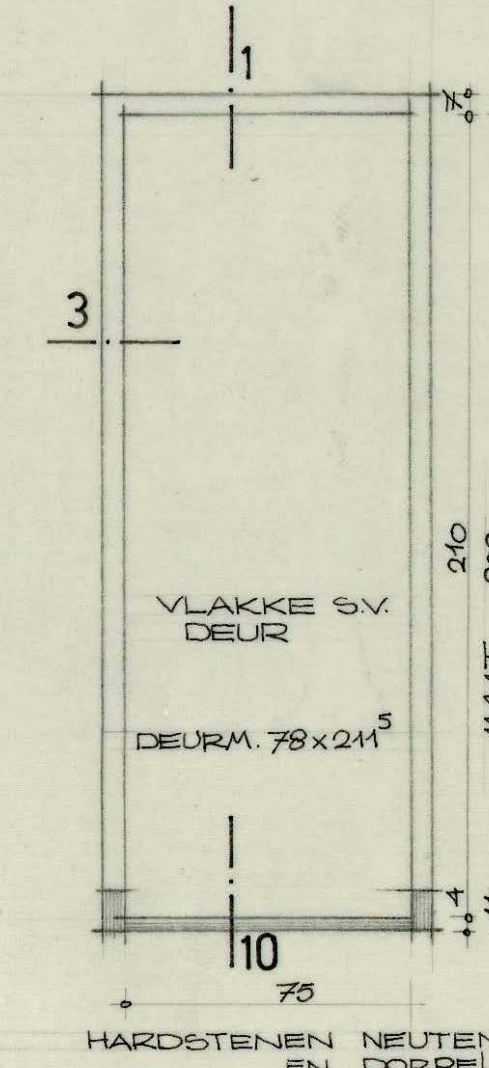
MERK I CX 7 ST.



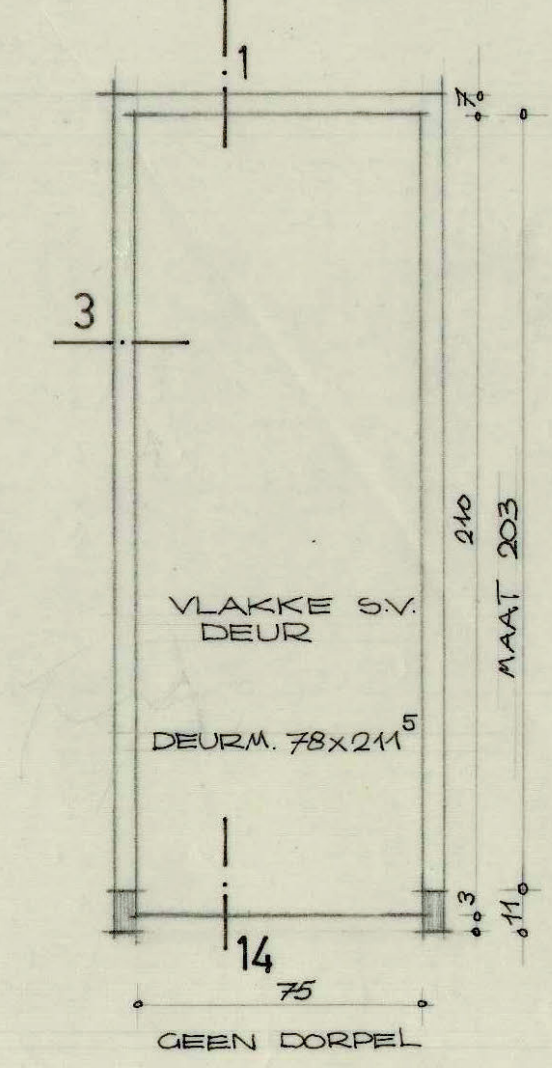
MERK I D 5 ST.



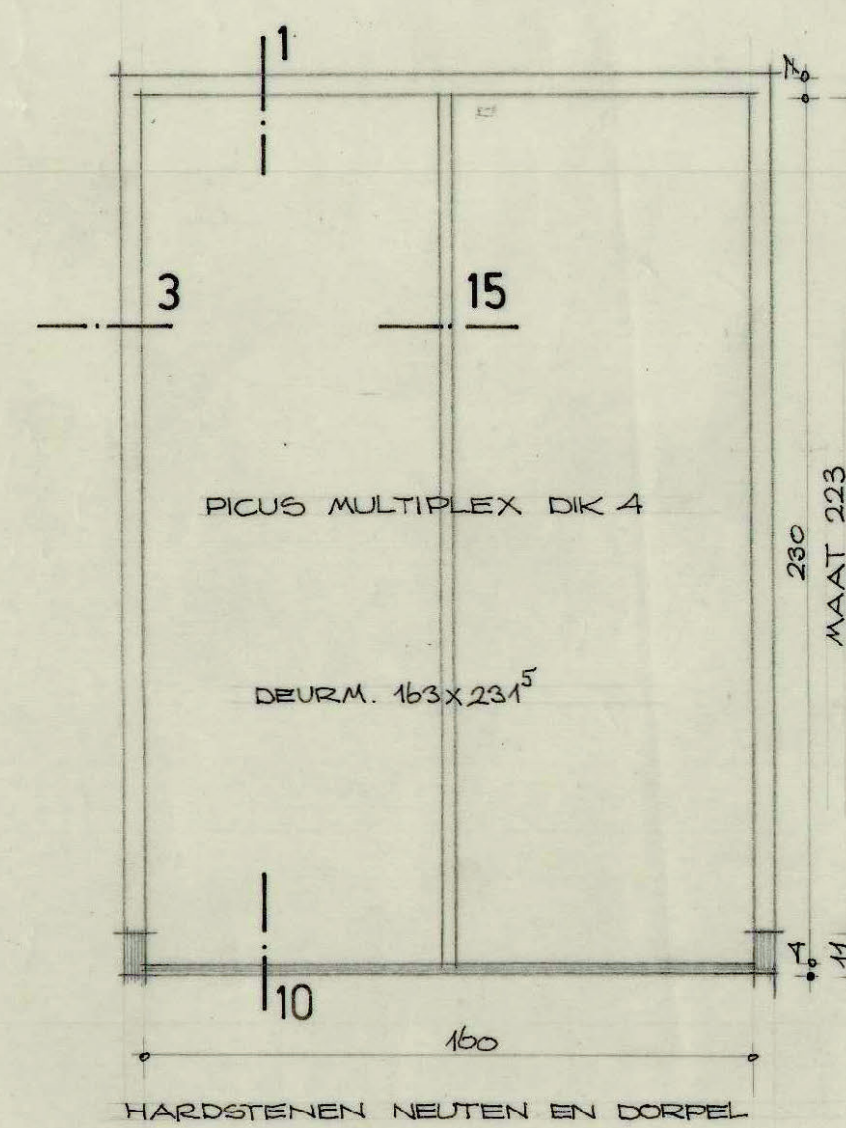
MERK II A 12 ST.



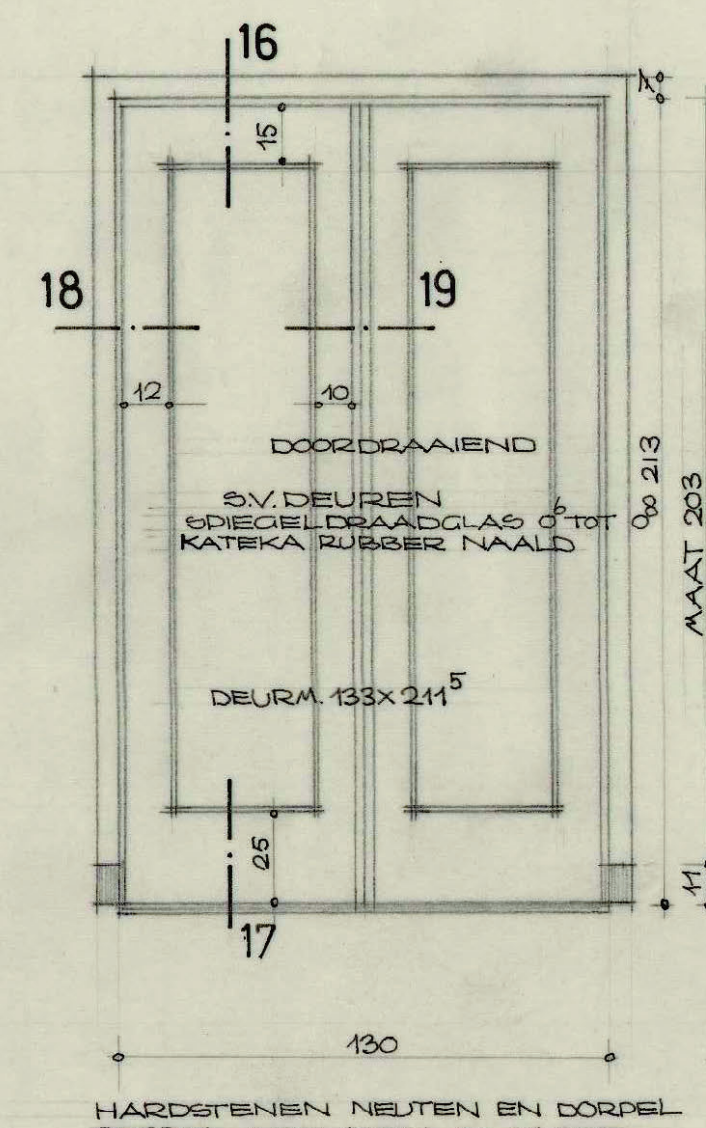
MERK II B 8 ST.



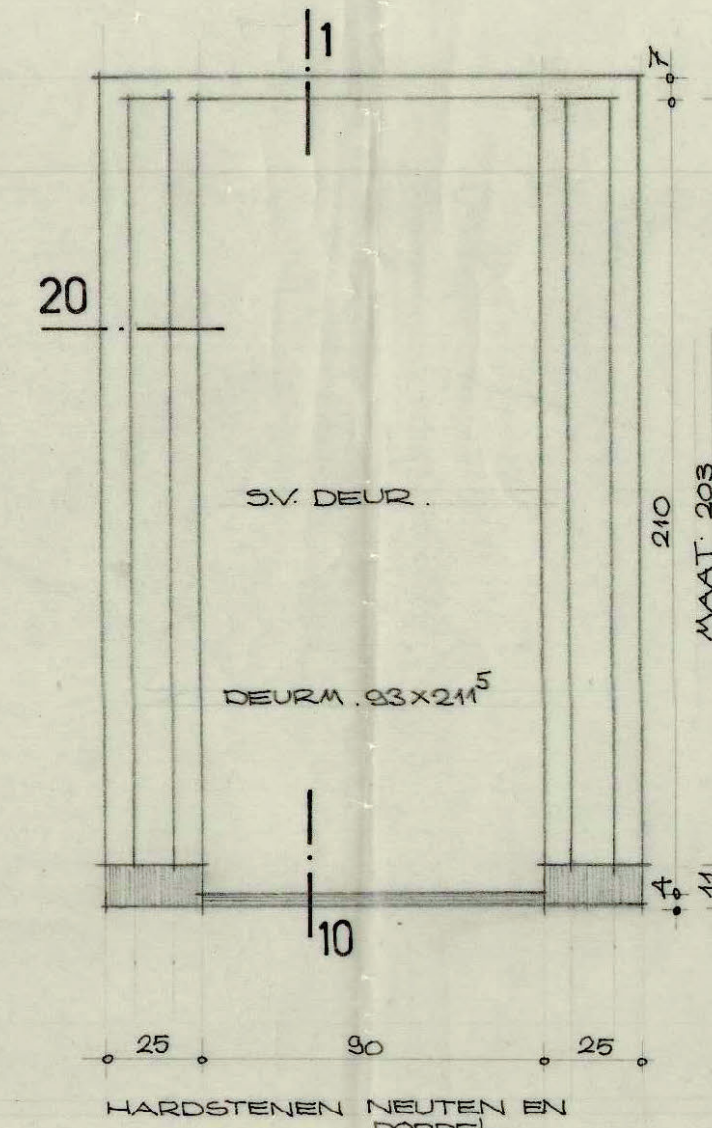
MERK II C 10 ST.



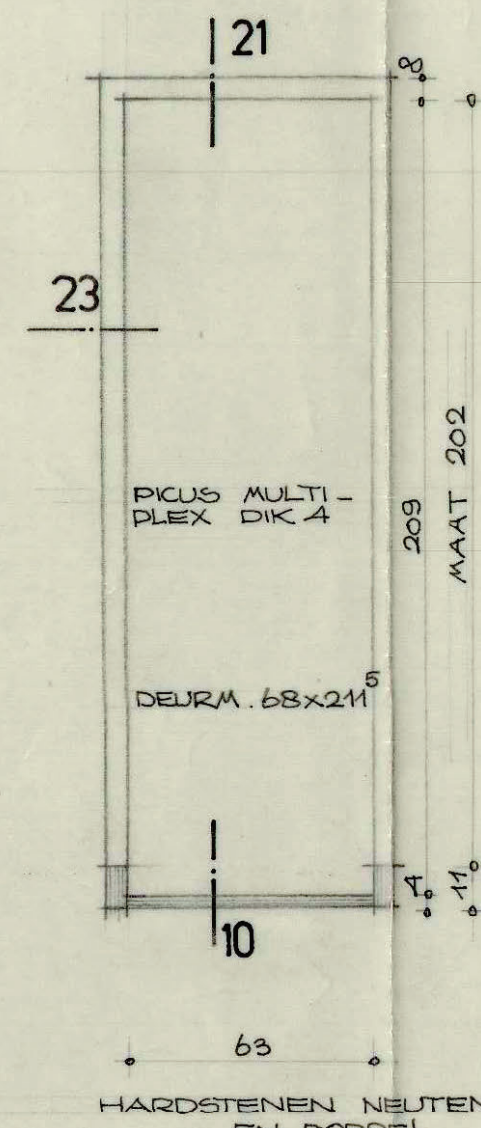
MERK III 6 ST.



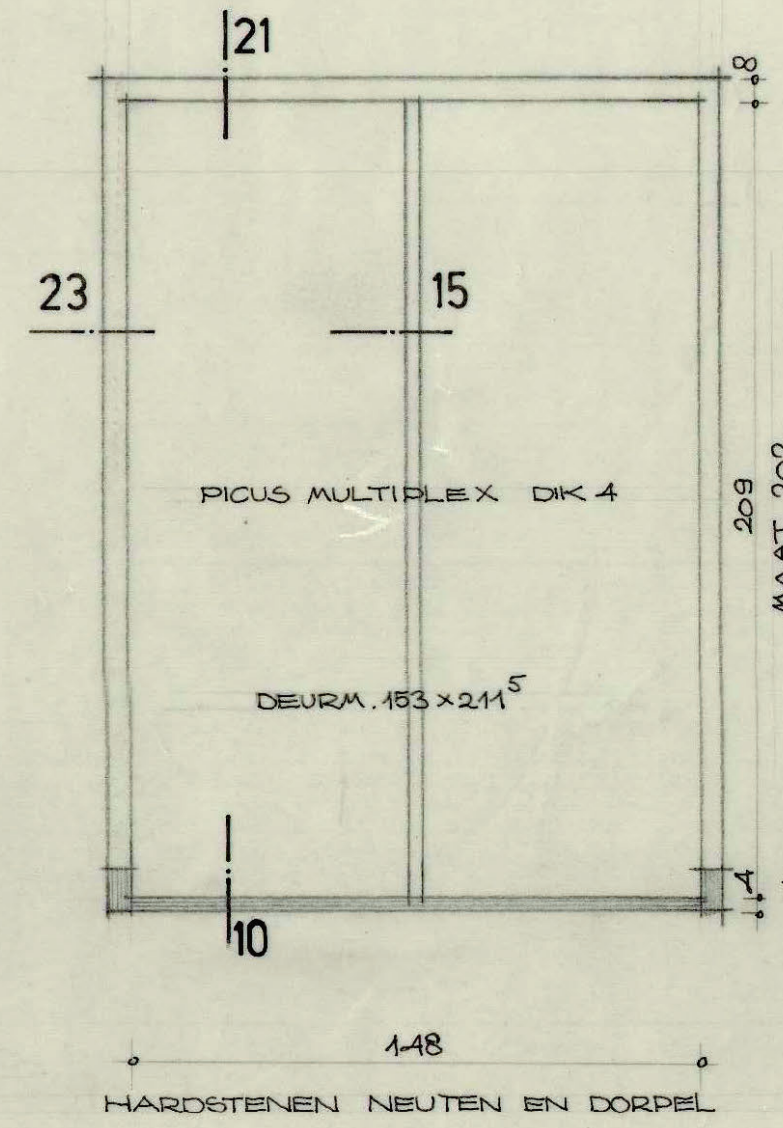
MERK IV 4 ST.



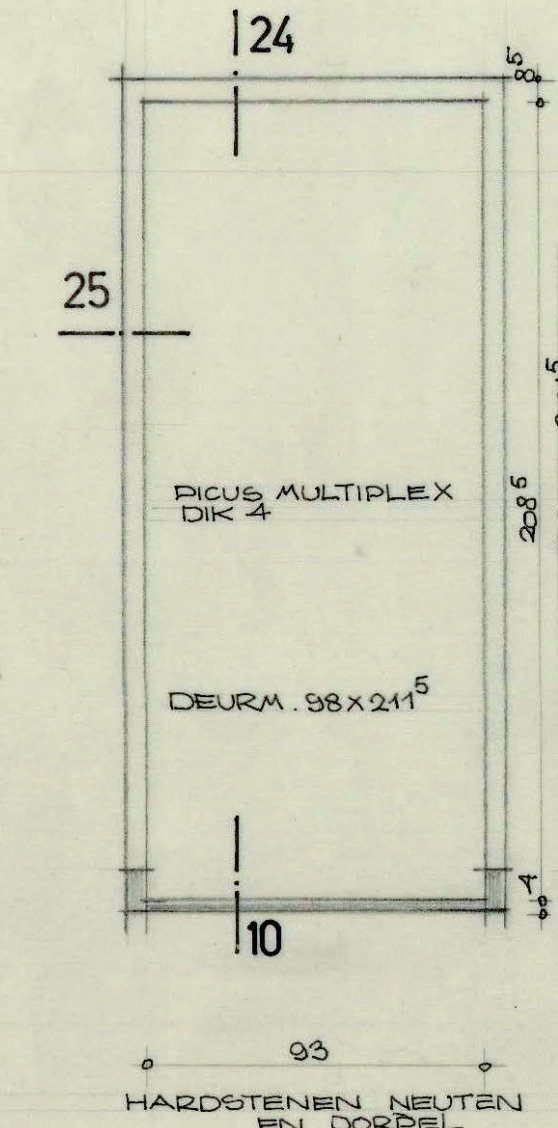
MERK V 1 ST.



MERK VI 5 ST.



MERK VII 1 ST.



MERK VIII 1 ST.

VOOR DET. NO. 1 TM 19 ZIE BLAD 5_B_2
20 TM 25 5_B_3
AFTIMMERINGEN 5_B_3
DET. NO. 22 IS VERVALLEN

ARCHITECTENBUREAU BERGHOEF & KLARENBECK AALSMEER EN IR J. F. HONDUS TE AMSTERDAM			
SCHAAL	RAADHUIS TE ALBLASSERDAM		
1:20			
DOSSIER NO. 445	GETEKEND VERVANGT	NDKOELEN SEPT. 62 GEWIJZIGD	GEZIEN: BLAD NO. 5_B_1
VERZAMELBLAD BINNEN- KOZJEN			