

## Bonifatius mis

voor mezzo sopraan, tenor en bas

Otto Deden 1976

## Kyrie

Handwritten musical score for Kyrie, featuring three systems of music for mezzo sopraan, tenor, and bass.

**System 1:**

- Mezzo sopraan: Ky-ri e e-lei-son, e-lei-son. Kyrie e-lei son, e-
- Tenor: Ky-ri e e-lei — — — — — Son, Kyrie e-lei — — — — —
- Bass: Kyrie e e-lei — — — — — son Kyrie, Kyrie e e-lei-son

**System 2:**

- Mezzo sopraan: lei-son. Kyrie e leison, e-lei — — — — — Son.
- Tenor: — — — — — son. Kyrie e e-lei-son, e-le — — — — — i-son.
- Bass: ky-ri e, kyrie e leison e-lei — — — — — Son.

**System 3:**

- Mezzo sopraan: chri-ste e-lei-son e-lei — — — — —
- Tenor: — — — — —
- Bass: chri-ste e-lei-son e-lei — — — — — son e-lei — — — — —

Dynamic markings include *p*, *mp*, *mf*, *dim*, and *dim-...*. Some notes are circled in red.



Son. chri - Ste, e - lei - son, e - lei - son.

lei - son, e - lei - son, e - lei - son.

son, e - lei son, e - lei - son, e - lei - son.

④

Ky - rie e - lei - son e - lei - son, Kyrie e - lei - son e - lei - son, Kyrie e - lei - son e - lei - son.

Ky - rie e - lei - son Kyrie e - lei - son

- lei son. Kyrie e - lei son e - lei - son.

- son. Kyrie e - lei - son, e - lei - son.

Ky - rie Kyrie e - lei son, e - lei - son.



# Gloria in excelsis Deo

Et in terra Pax homini-bus bo-nae vo-lun-ta-tis, Lau-

Et in terra Pax homini-bus, bo-nae vo-lun-ta-tis, Lau-

Et in terra Pax homini-bus bo-nae vo-lun-ta-tis. Lau-

⑤ da-mus te, Bene dici-mus te, Ado-ra-mus te, Glo-ri-fi-ca-mus te.

da-mus te. Bene-di-ci-mus te. Ado-ra-mus te. glo-ri-fi-ca-mus te.

da-mus te. Bene-di-ci-mus te. Ado-ra-mus te. Glo-ri-fi-ca-mus te

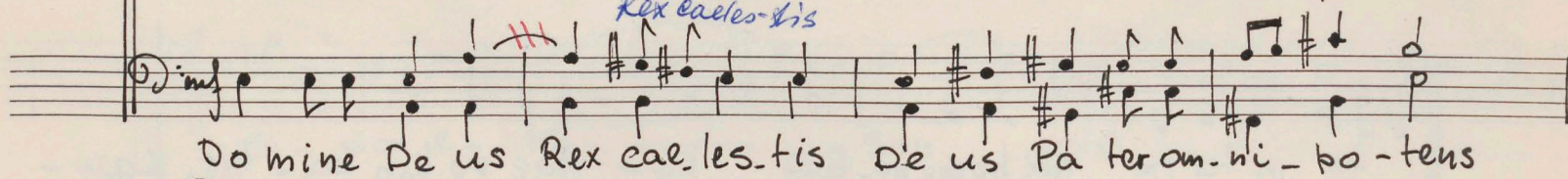
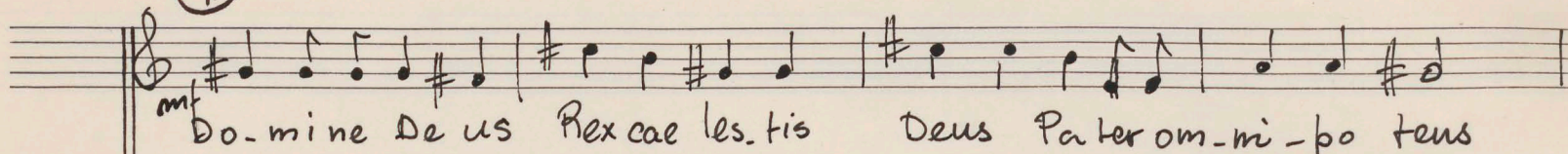
⑥ Gra-ti-as a-gi-mus ti-bi propter magnam glo-ri-am tu-am

gra-ti-as a-gi-mus ti-bi glo-ri-am tu-am

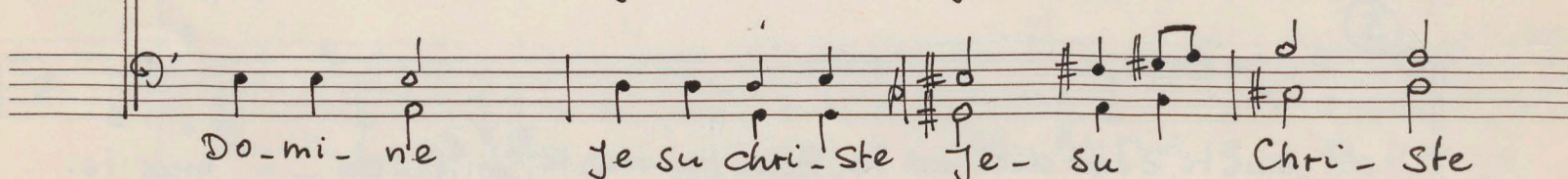
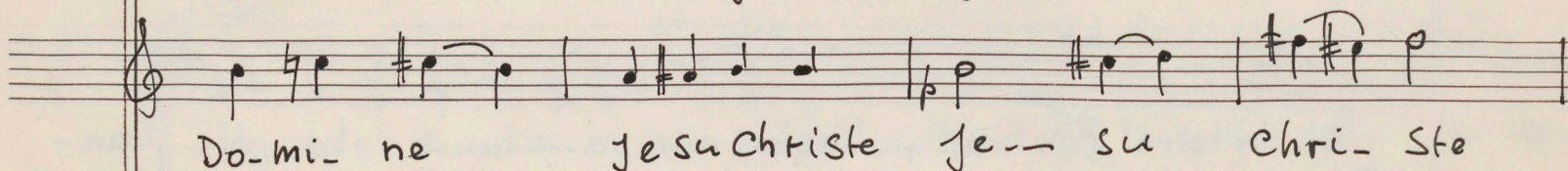
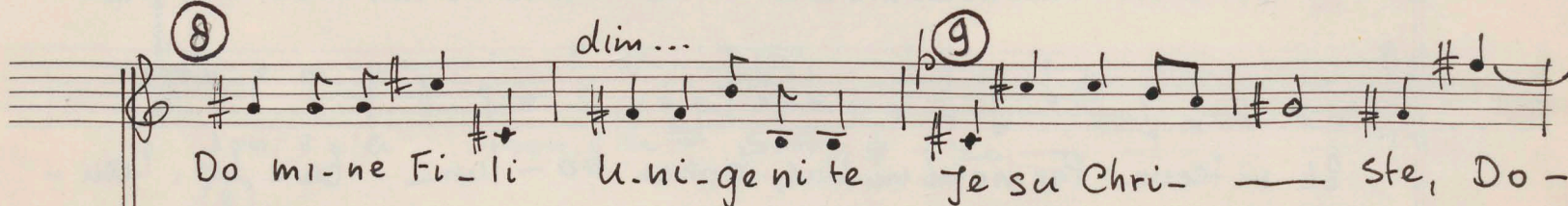
gra-ti-as a-gi-mus ti-bi glo-ri-am tu-am



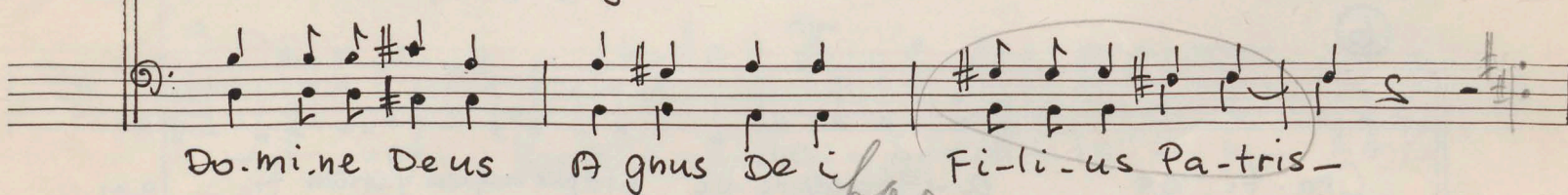
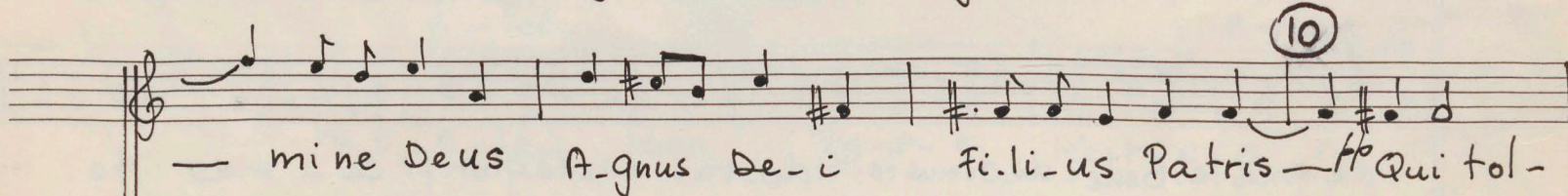
7



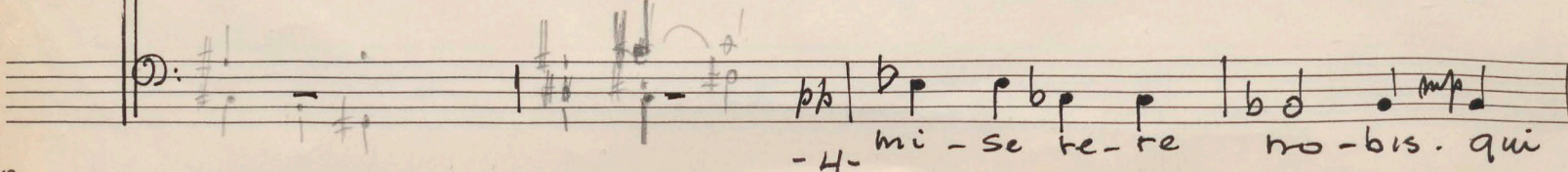
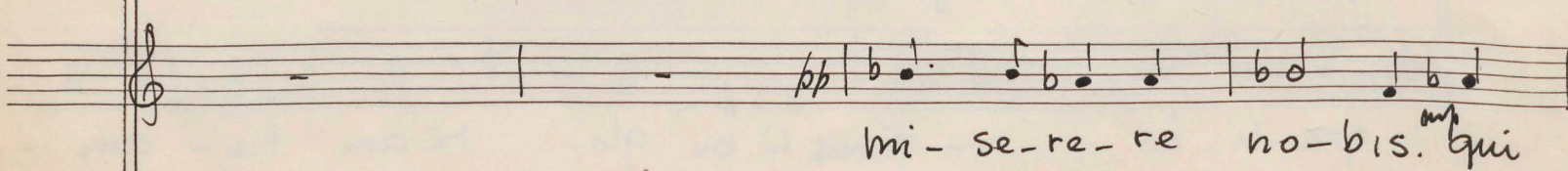
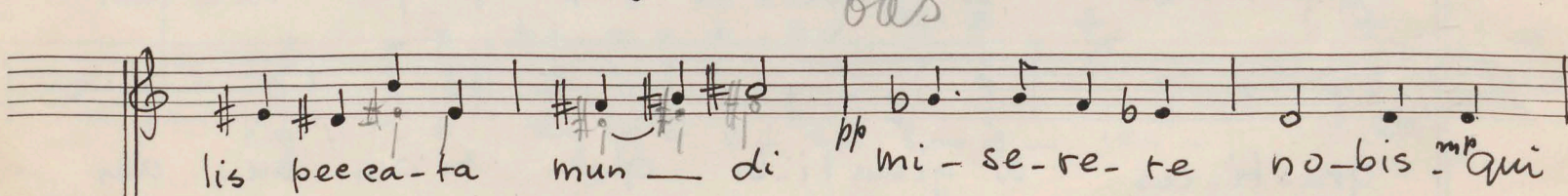
8



9



10





11

tol-lis pec-ca ta mundi suscipe de-pre-ca ti - o - nem no-stram. qui-

tol-lis pec-ca ta mundi Suscipe de-pre-ca ti - o - nem no-stram -

tol-lis pec-ca ta mundi suscipe de pre-ca ti - o - nem no Stram. Qui

12

se-des ad dexte-ram Pa-tris mi se re re ho-bis

se-des ad dexte-ram Pa-tris mi se re re ho-bis

se-des ad dexte-ram Pa-tris mi se re re ho-bis

13

14

Quo ni am tu So-lus San-ctus tu So-lus

Quo ni-am tu So-lus San-ctus tu So-lus

Quo ni am tu So-lus San-ctus. tu So-lus

Do mi nus, tu So-lus Al-tissi-mus Je-su chri-ste

Do mi nus, tu So-lus Al-tissi-mus Je-su chri-ste

Do - mi nus tu So - lus Al - tissi - mus Je - su chri - ste



15 Cum Sancto Spi-ri-tu in gloria De-i

16 Cum Sancto

Cum sancto Spi-ri-tu in glo-ri-a De-i Pa-tris

17 Pa-tris. Cum Sancto Spi-ri-tu in glo-ri-a De-i

Spi-ri-tu in glo-ri-a, in glo-ri-a, in glo-ri-a

A-men, in glo-ri-a, in glo-ri-a, A-men, Cum Sancto

18 - Pa-tris A-men, A-men, A-men

De-i Pa-tris, A-

Spi-ri-tu in glo-ri-a, in glo-ri-a De-i Patris

Allargando - - -

men.

Allargando - - -

men, A-men, men.

Allargando - - -

A-men, men.



# Sanctus

(19)

San - ctus, San - ctus,  
 San - ctus, San - ctus,  
 San - ctus, San - ctus,

(20)

(21)

San ctus, Do - minus Deus Sa - ba - oth Ple - ni sunt  
 San ctus De - us Sa - ba - oth Ple - ni sunt  
 Sanctus Dominus Deus Saba - oth Ple - ni sunt

cresc..

Cae - li et ter - ra glo - ria tua, Ho San na in ex - cel - sis  
 Cae - li glo - ri - a tua, Ho San na in ex - cel sis  
 Cae - li glo - ri a tua Ho a Ho San na in ex cel - sis



22

Be — ne — di — ctus, qui ve — nit, qui ve — nit in no — mi — ne

Be — ne — di — ctus, qui ve — nit, qui — ve nit in no — mi — ne

Be — ne di — ctus qui ve nit qui ve — nit in ho — mi — ne

23

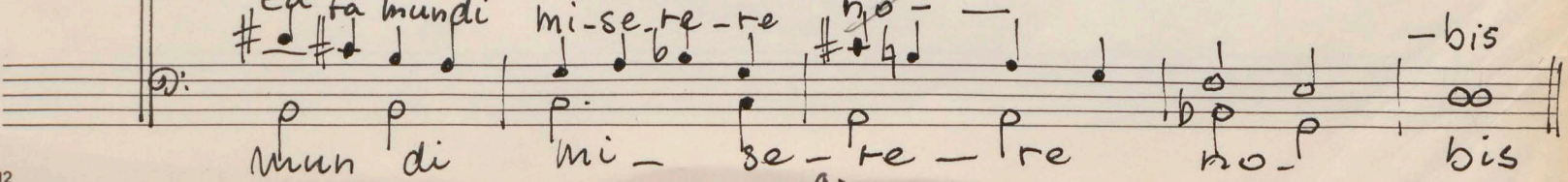
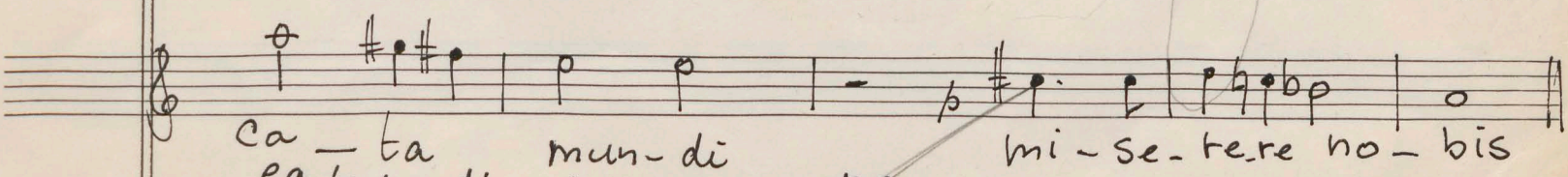
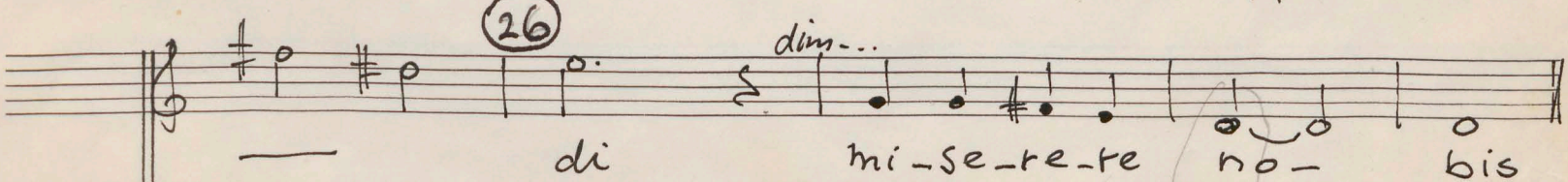
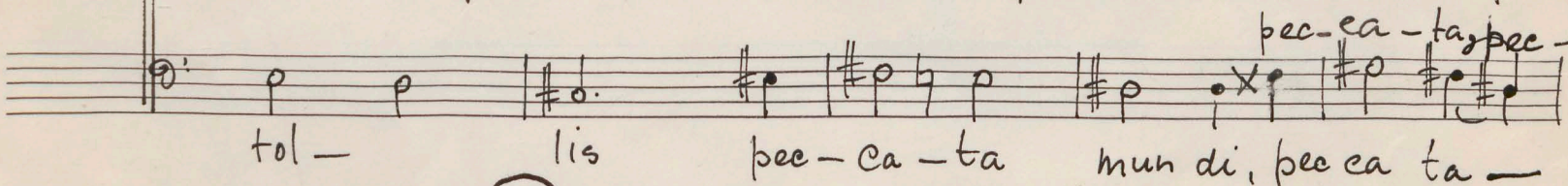
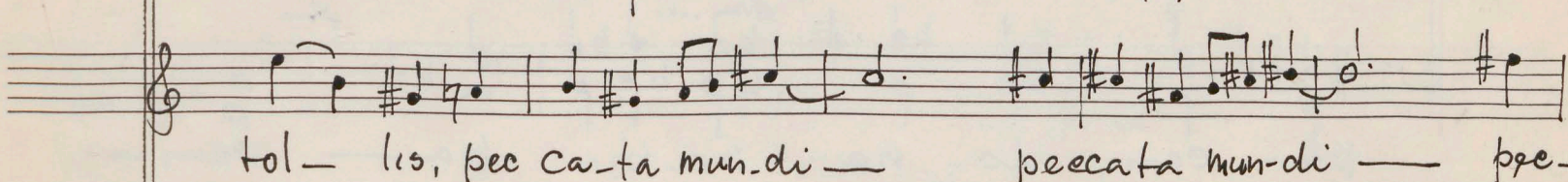
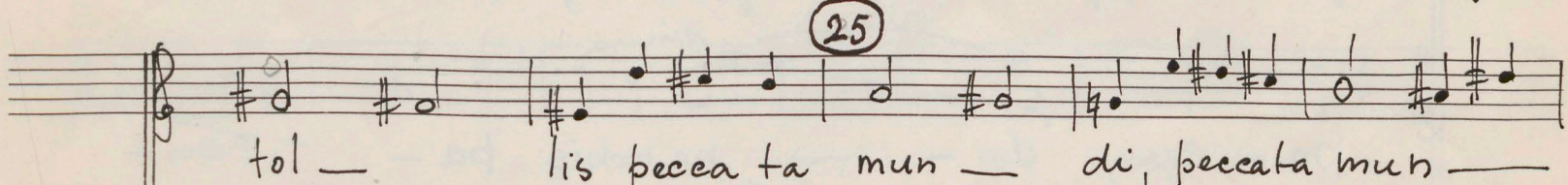
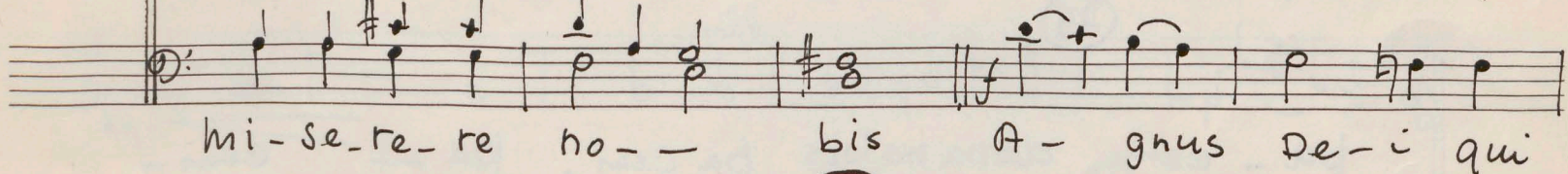
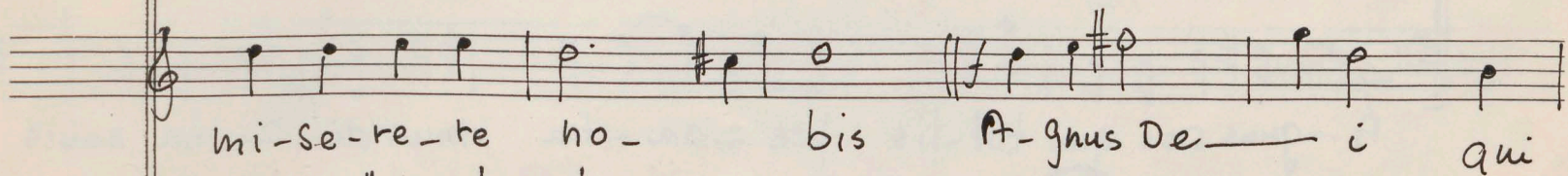
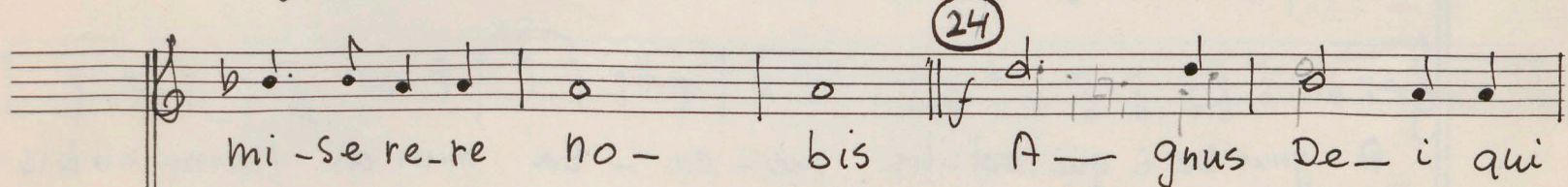
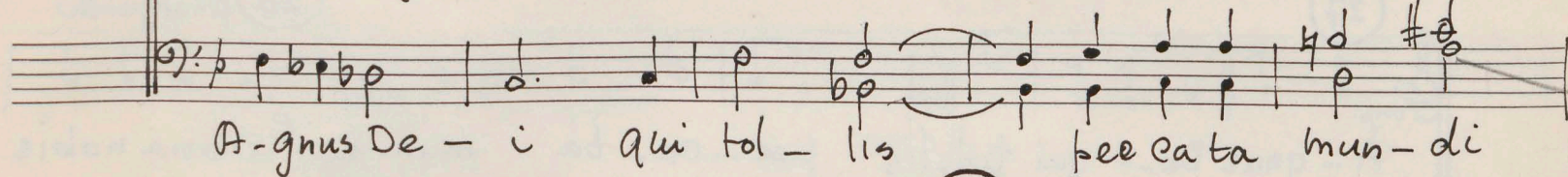
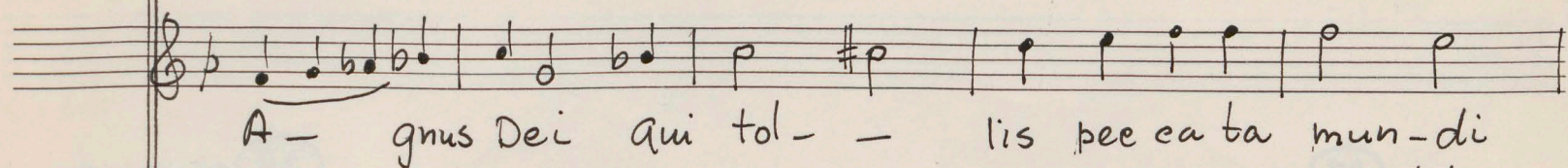
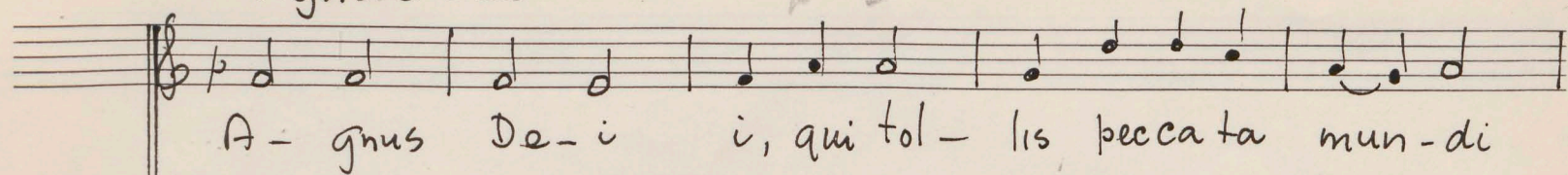
Do mi ni, Ho — San — na, Ho — San — na in ex — cel — sis.

Do — mi — ni, Ho — San — na, Ho — San — na in ex cel — sis

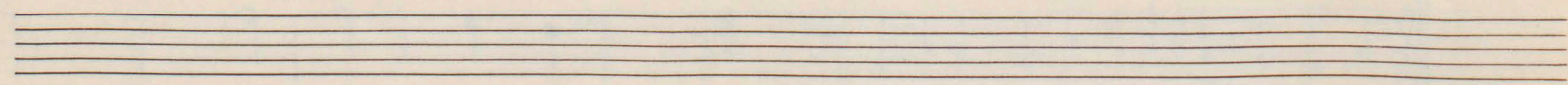
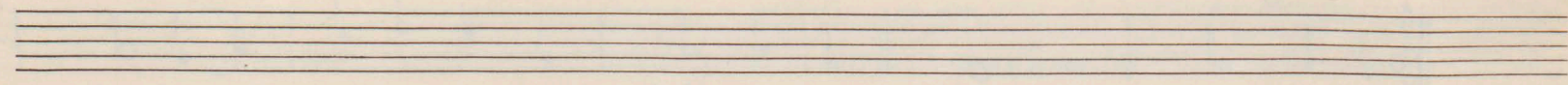
Do — mi — ni Ho — San — na, Ho — San — na in ex — cel — sis



# Agnus Dei.







(27) *mp* A - gnus De - i qui tol - lis pec - ca - ta mun - di Dona nobis

(28) *allargando* *p* A - gnus De i qui tol - lis pec - ca - ta mun di Do - na nobis

*mp* A - gnus Dei qui tol - lis pec - ca - ta mun di Do - na nobis

(29) *dim...* pa - cem, dona nobis pa cem, pa — cem —

*dim...* pa - cem, do — na nobis pa — cem —

*dim...* pa - cem, do - na no - bis pa — cem —

