

CANTATE 65 OTTO DE DEN '89

mm 66

Viol I

mp

rit. ♩ = ♩. a tempo

mf

poco rall. ♩ = ♩

Koor a capella.

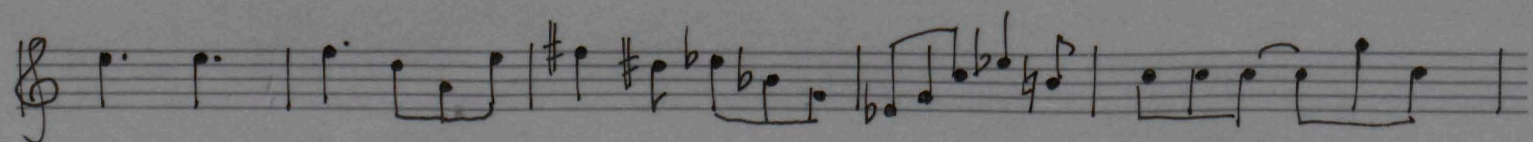
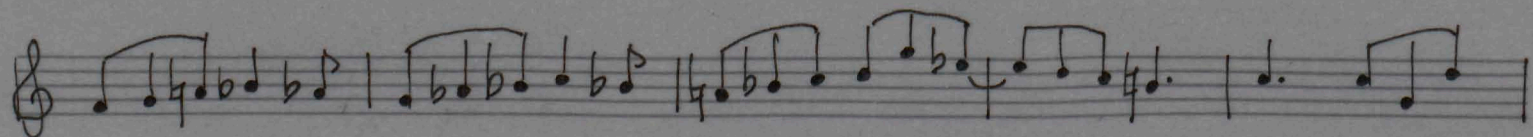
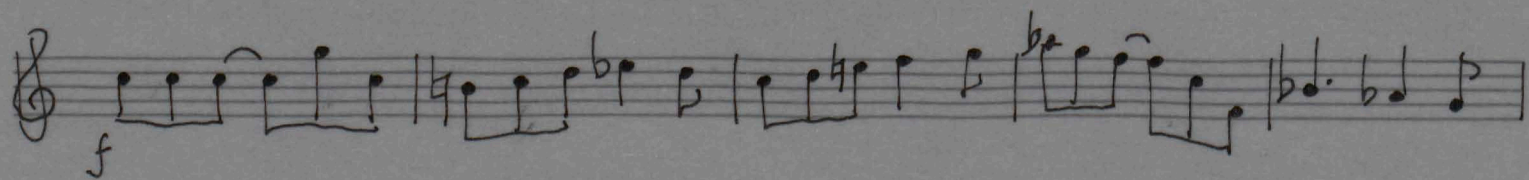
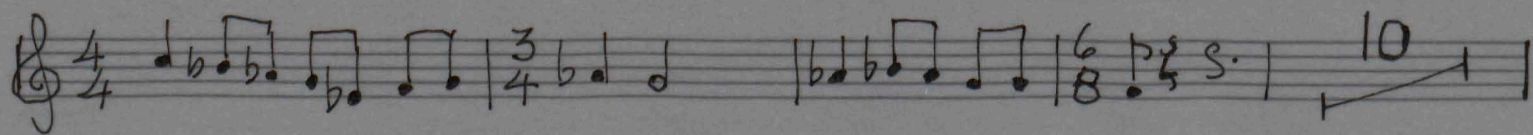
mf

marcato

f

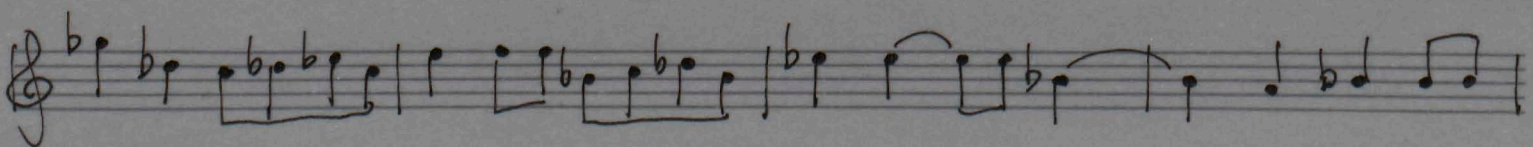
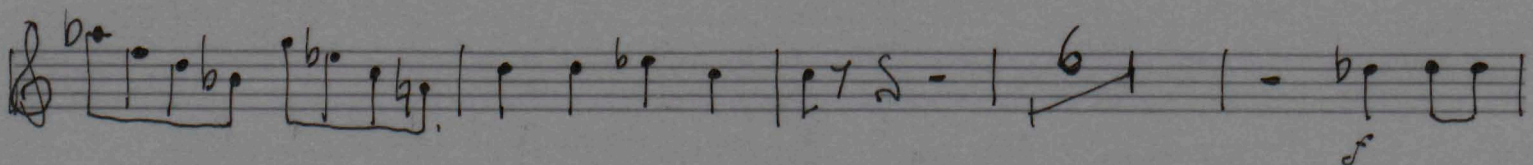
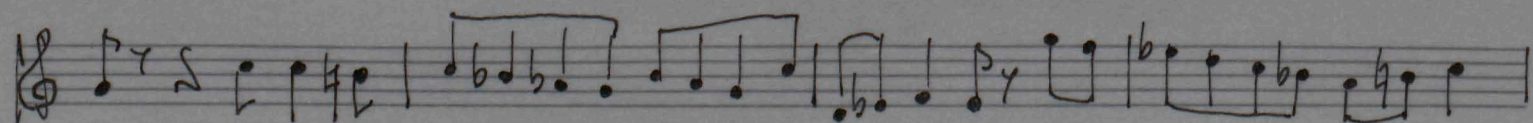
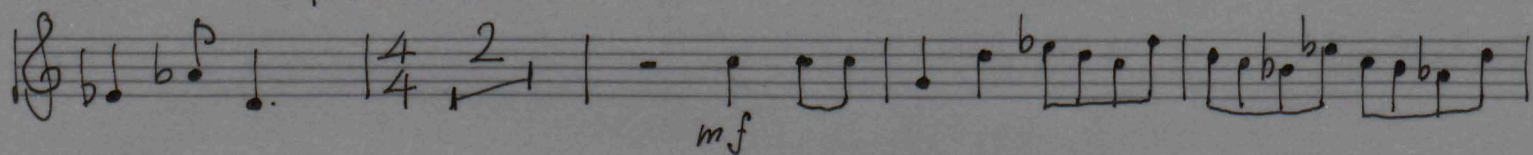
v/I

$\text{♩} = \text{♩}$

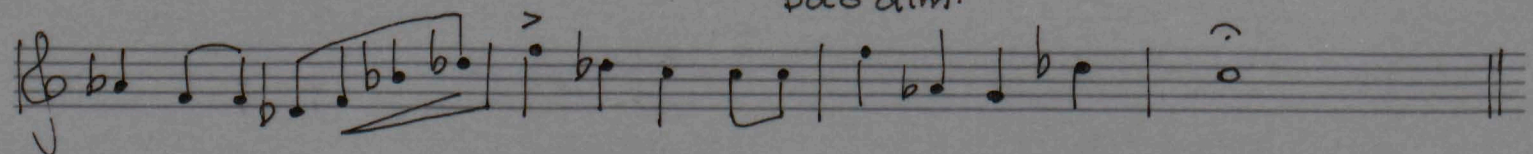


rall.

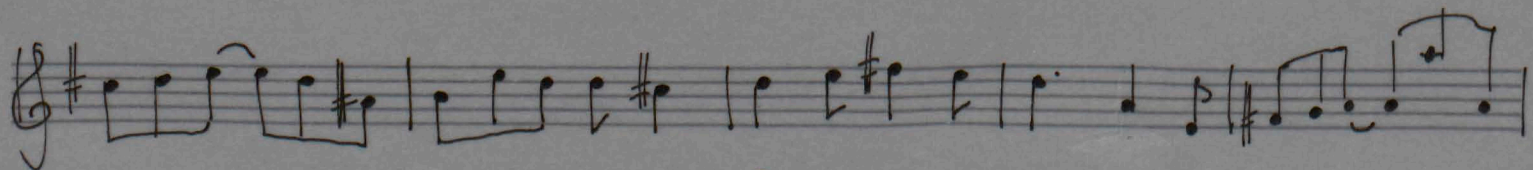
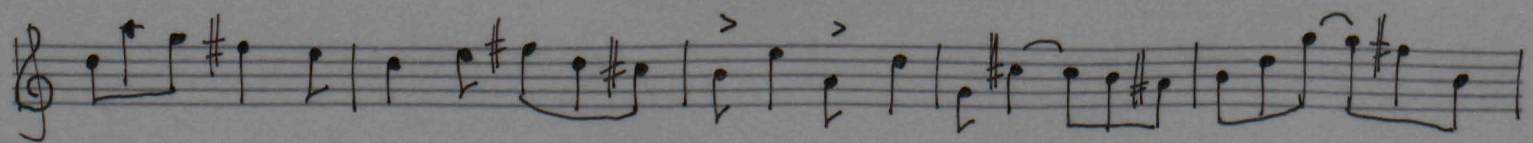
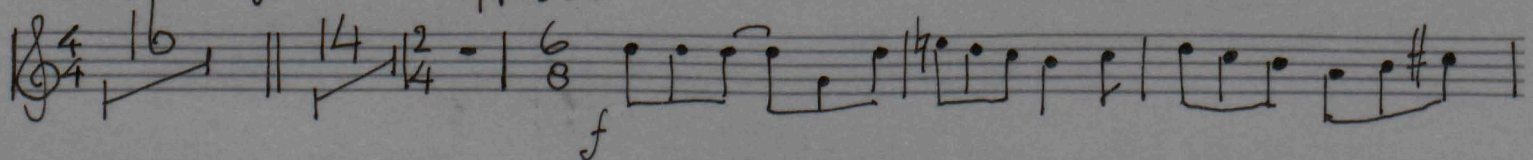
p. marcato $\text{♩} = \text{♩}$



poco dim.



alt solo + orgel. Koor a capp. $\text{♩} = \text{♩}$




OTTO DEDEN 89

mm 66

|| Viol II || $\frac{4}{4}$ $\overset{13}{\text{I}}$ | - $\underset{m/p}{d}$ | $\underset{m/p}{d}$ $\underset{m/p}{e}$ $\underset{m/p}{f}$ $\underset{m/p}{g}$ | $\underset{m/p}{a}$ $\underset{m/p}{b}$ - | - $\underset{m/p}{b}$ $\underset{m/p}{p}$ |

b. tit. $\text{♩} = \text{♩}$ a tempo

[illegible]

A single staff of handwritten musical notation. The staff begins with a treble clef. The first measure contains a quarter note with a sharp sign (#) on the second line, followed by a quarter rest, and then a quarter note on the second line. The second measure contains a quarter note on the second line, followed by a quarter note on the second line with a sharp sign (#), and then a quarter note on the second line. The third measure contains a quarter note on the second line, followed by a quarter note on the second line with a sharp sign (#), and then a quarter note on the second line. The fourth measure contains a quarter note on the second line, followed by a quarter note on the second line with a sharp sign (#), and then a quarter note on the second line. The fifth measure contains a quarter note on the second line, followed by a quarter note on the second line with a sharp sign (#), and then a quarter note on the second line. The sixth measure contains a quarter note on the second line, followed by a quarter note on the second line with a sharp sign (#), and then a quarter note on the second line. The seventh measure contains a quarter note on the second line, followed by a quarter note on the second line with a sharp sign (#), and then a quarter note on the second line. The eighth measure contains a quarter note on the second line, followed by a quarter note on the second line with a sharp sign (#), and then a quarter note on the second line. The ninth measure contains a quarter note on the second line, followed by a quarter note on the second line with a sharp sign (#), and then a quarter note on the second line. The tenth measure contains a quarter note on the second line, followed by a quarter note on the second line with a sharp sign (#), and then a quarter note on the second line. The eleventh measure contains a quarter note on the second line, followed by a quarter note on the second line with a sharp sign (#), and then a quarter note on the second line. The twelfth measure contains a quarter note on the second line, followed by a quarter note on the second line with a sharp sign (#), and then a quarter note on the second line. The thirteenth measure contains a quarter note on the second line, followed by a quarter note on the second line with a sharp sign (#), and then a quarter note on the second line. The fourteenth measure contains a quarter note on the second line, followed by a quarter note on the second line with a sharp sign (#), and then a quarter note on the second line. The fifteenth measure contains a quarter note on the second line, followed by a quarter note on the second line with a sharp sign (#), and then a quarter note on the second line. The sixteenth measure contains a quarter note on the second line, followed by a quarter note on the second line with a sharp sign (#), and then a quarter note on the second line. The seventeenth measure contains a quarter note on the second line, followed by a quarter note on the second line with a sharp sign (#), and then a quarter note on the second line. The eighteenth measure contains a quarter note on the second line, followed by a quarter note on the second line with a sharp sign (#), and then a quarter note on the second line. The nineteenth measure contains a quarter note on the second line, followed by a quarter note on the second line with a sharp sign (#), and then a quarter note on the second line. The twentieth measure contains a quarter note on the second line, followed by a quarter note on the second line with a sharp sign (#), and then a quarter note on the second line. The notation is written in brown ink on a light blue background.

Handwritten musical notation for the second system of 'The Rose Tree'. The notation is on a single staff with a treble clef and a key signature of one flat (B-flat). The melody consists of the following notes: G4 (quarter), A4 (quarter), Bb4 (quarter), A4 (quarter), G4 (quarter), F4 (quarter), E4 (quarter), D4 (half). There are slurs over the first four notes and the last four notes. A fermata is placed over the final D4 note. Above the staff, the tempo marking 'rall. e dim.' is written. The system ends with a double bar line.

Koor a cappella

Koor:

Handwritten musical notation for the first staff of 'The Rose Tree'. The staff is in treble clef and contains four measures. The first measure has a 3/4 time signature and a half note G. The second measure has a 2/4 time signature and a half note A. The third measure has a 6/8 time signature and two eighth notes G and A. The fourth measure has a 4/4 time signature and a half note G. The piece ends with a double bar line.

Handwritten musical notation for the first staff of 'The Rose Tree'. The staff is in treble clef with a key signature of one flat (B-flat). The time signature is 4/4. The melody consists of the following notes: G4 (quarter), A4 (quarter), Bb4 (quarter), A4 (quarter), G4 (quarter), F4 (quarter), E4 (quarter), D4 (half). The staff ends with a double bar line.

[illegible]

marcato

mf

poco rall. e dim. $\text{♩} = \text{♩}$ *marcato* Koor fuga

mf

dim. *alt solo*

16

VI I

cresc *>* *>* *>*

dim *poco rall.* *f* *♩. = ♩. a tempo (Koor)*

molto allarg.

VI 2.

$\text{♩} = \text{♩}$ marcato

f

rall.


atempo. Koor

f

molto rall.

CANTATE 65

OTTO DE DEN 89

Allegro 

[illegible]

marcato

mf

Handwritten musical notation for the first staff of the song 'The Rose Tree'. The staff begins with a treble clef and a key signature of one sharp (F#). The melody consists of eighth and quarter notes, with some beamed eighth notes. The notes are: C4, D4, E4, F#4, G4, A4, B4, C5, D5, E5, F#5, G5, A5, B5, C6, D6, E6, F#6, G6, A6, B6, C7, D7, E7, F#7, G7, A7, B7, C8, D8, E8, F#8, G8, A8, B8, C9, D9, E9, F#9, G9, A9, B9, C10, D10, E10, F#10, G10, A10, B10, C11, D11, E11, F#11, G11, A11, B11, C12, D12, E12, F#12, G12, A12, B12, C13, D13, E13, F#13, G13, A13, B13, C14, D14, E14, F#14, G14, A14, B14, C15, D15, E15, F#15, G15, A15, B15, C16, D16, E16, F#16, G16, A16, B16, C17, D17, E17, F#17, G17, A17, B17, C18, D18, E18, F#18, G18, A18, B18, C19, D19, E19, F#19, G19, A19, B19, C20, D20, E20, F#20, G20, A20, B20, C21, D21, E21, F#21, G21, A21, B21, C22, D22, E22, F#22, G22, A22, B22, C23, D23, E23, F#23, G23, A23, B23, C24, D24, E24, F#24, G24, A24, B24, C25, D25, E25, F#25, G25, A25, B25, C26, D26, E26, F#26, G26, A26, B26, C27, D27, E27, F#27, G27, A27, B27, C28, D28, E28, F#28, G28, A28, B28, C29, D29, E29, F#29, G29, A29, B29, C30, D30, E30, F#30, G30, A30, B30, C31, D31, E31, F#31, G31, A31, B31, C32, D32, E32, F#32, G32, A32, B32, C33, D33, E33, F#33, G33, A33, B33, C34, D34, E34, F#34, G34, A34, B34, C35, D35, E35, F#35, G35, A35, B35, C36, D36, E36, F#36, G36, A36, B36, C37, D37, E37, F#37, G37, A37, B37, C38, D38, E38, F#38, G38, A38, B38, C39, D39, E39, F#39, G39, A39, B39, C40, D40, E40, F#40, G40, A40, B40, C41, D41, E41, F#41, G41, A41, B41, C42, D42, E42, F#42, G42, A42, B42, C43, D43, E43, F#43, G43, A43, B43, C44, D44, E44, F#44, G44, A44, B44, C45, D45, E45, F#45, G45, A45, B45, C46, D46, E46, F#46, G46, A46, B46, C47, D47, E47, F#47, G47, A47, B47, C48, D48, E48, F#48, G48, A48, B48, C49, D49, E49, F#49, G49, A49, B49, C50, D50, E50, F#50, G50, A50, B50, C51, D51, E51, F#51, G51, A51, B51, C52, D52, E52, F#52, G52, A52, B52, C53, D53, E53, F#53, G53, A53, B53, C54, D54, E54, F#54, G54, A54, B54, C55, D55, E55, F#55, G55, A55, B55, C56, D56, E56, F#56, G56, A56, B56, C57, D57, E57, F#57, G57, A57, B57, C58, D58, E58, F#58, G58, A58, B58, C59, D59, E59, F#59, G59, A59, B59, C60, D60, E60, F#60, G60, A60, B60, C61, D61, E61, F#61, G61, A61, B61, C62, D62, E62, F#62, G62, A62, B62, C63, D63, E63, F#63, G63, A63, B63, C64, D64, E64, F#64, G64, A64, B64, C65, D65, E65, F#65, G65, A65, B65, C66, D66, E66, F#66, G66, A66, B66, C67, D67, E67, F#67, G67, A67, B67, C68, D68, E68, F#68, G68, A68, B68, C69, D69, E69, F#69, G69, A69, B69, C70, D70, E70, F#70, G70, A70, B70, C71, D71, E71, F#71, G71, A71, B71, C72, D72, E72, F#72, G72, A72, B72, C73, D73, E73, F#73, G73, A73, B73, C74, D74, E74, F#74, G74, A74, B74, C75, D75, E75, F#75, G75, A75, B75, C76, D76, E76, F#76, G76, A76, B76, C77, D77, E77, F#77, G77, A77, B77, C78, D78, E78, F#78, G78, A78, B78, C79, D79, E79, F#79, G79, A79, B79, C80, D80, E80, F#80, G80, A80, B80, C81, D81, E81, F#81, G81, A81, B81, C82, D82, E82, F#82, G82, A82, B82, C83, D83, E83, F#83, G83, A83, B83, C84, D84, E84, F#84, G84, A84, B84, C85, D85, E85, F#85, G85, A85, B85, C86, D86, E86, F#86, G86, A86, B86, C87, D87, E87, F#87, G87, A87, B87, C88, D88, E88, F#88, G88, A88, B88, C89, D89, E89, F#89, G89, A89, B89, C90, D90, E90, F#90, G90, A90, B90, C91, D91, E91, F#91, G91, A91, B91, C92, D92, E92, F#92, G92, A92, B92, C93, D93, E93, F#93, G93, A93, B93, C94, D94, E94, F#94, G94, A94, B94, C95, D95, E95, F#95, G95, A95, B95, C96, D96, E96, F#96, G96, A96, B96, C97, D97, E97, F#97, G97, A97, B97, C98, D98, E98, F#98, G98, A98, B98, C99, D99, E99, F#99, G99, A99, B99, C100, D100, E100, F#100, G100, A100, B100, C101, D101, E101, F#101, G101, A101, B101, C102, D102, E102, F#102, G102, A102, B102, C103, D103, E103, F#103, G103, A103, B103, C104, D104, E104, F#104, G104, A104, B104, C105, D105, E105, F#105, G105, A105, B105, C106, D106, E106, F#106, G106, A106, B106, C107, D107, E107, F#107, G107, A107, B107, C108, D108, E108, F#108, G108, A108, B108, C109, D109, E109, F#109, G109, A109, B109, C110, D110, E110, F#110, G110, A110, B110, C111, D111, E111, F#111, G111, A111, B111, C112, D112, E112, F#112, G112, A112, B112, C113, D113, E113, F#113, G113, A113, B113, C114, D114, E114, F#114, G114, A114, B114, C115, D115, E115, F#115, G115, A115, B115, C116, D116, E116, F#116, G116, A116, B116, C117, D117, E117, F#117, G117, A117, B117, C118, D118, E118, F#118, G118, A118, B118, C119, D119, E119, F#119, G119, A119, B119, C120, D120, E120, F#120, G120, A120, B120, C121, D121, E121, F#121, G121, A121, B121, C122, D122, E122, F#122, G122, A122, B122, C123, D123, E123, F#123, G123, A123, B123, C124, D124, E124, F#124, G124, A124, B124, C125, D125, E125, F#125, G125, A125, B125, C126, D126, E126, F#126, G126, A126, B126, C127, D127, E127, F#127, G127, A127, B127, C128, D128, E128, F#128, G128, A128, B128, C129, D129, E129, F#129, G129, A129, B129, C130, D130, E130, F#130, G130, A130, B130, C131, D131, E131, F#131, G131, A131, B131, C132, D132, E132, F#132, G132, A132, B132, C133, D133, E133, F#133, G133, A133, B133, C134, D134, E134, F#134, G134, A134, B134, C135, D135, E135, F#13

poco rall. e dim.

Koor a cappella

Handwritten musical notation for a 12-measure piece, likely a 12-measure exercise. The notation is written on a single staff with a treble clef. The notes and rests are as follows:

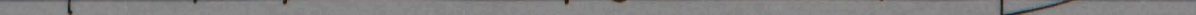
- Measure 1: G4, A4, B4 (quarter notes), C5 (half note).
- Measure 2: D5 (half note), C5 (quarter note), B4 (quarter note), A4 (quarter note).
- Measure 3: G4 (half note), F4 (half note), E4 (quarter note), D4 (quarter note).
- Measure 4: C4 (half note), B3 (half note), A3 (quarter note), G3 (quarter note).
- Measure 5: F3 (half note), E3 (half note), D3 (quarter note), C3 (quarter note).
- Measure 6: B2 (half note), A2 (half note), G2 (quarter note), F2 (quarter note).
- Measure 7: E2 (half note), D2 (half note), C2 (quarter note), B1 (quarter note).
- Measure 8: A1 (half note), G1 (half note), F1 (quarter note), E1 (quarter note).
- Measure 9: D1 (half note), C1 (half note), B0 (quarter note), A0 (quarter note).
- Measure 10: G0 (half note), F0 (half note), E0 (quarter note), D0 (quarter note).
- Measure 11: C0 (half note), B0 (half note), A0 (quarter note), G0 (quarter note).
- Measure 12: F0 (half note), E0 (half note), D0 (quarter note), C0 (quarter note).

Handwritten musical notation on a five-line staff. The notation includes time signatures (3/4, 2/4, 6/8, 4/4, 6/4), a key signature of one flat (B-flat), and various musical notes (quarter, eighth, and sixteenth notes) and rests. The notation is written in a cursive, handwritten style.

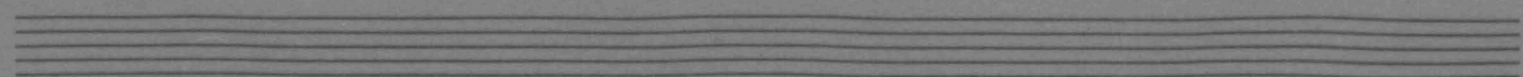
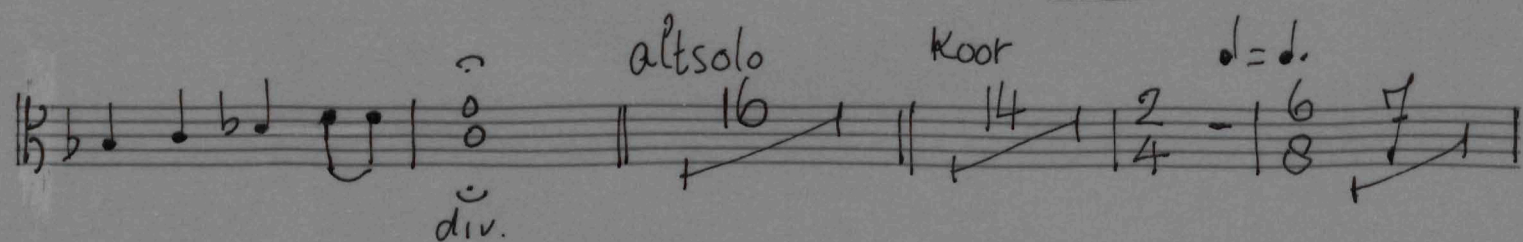
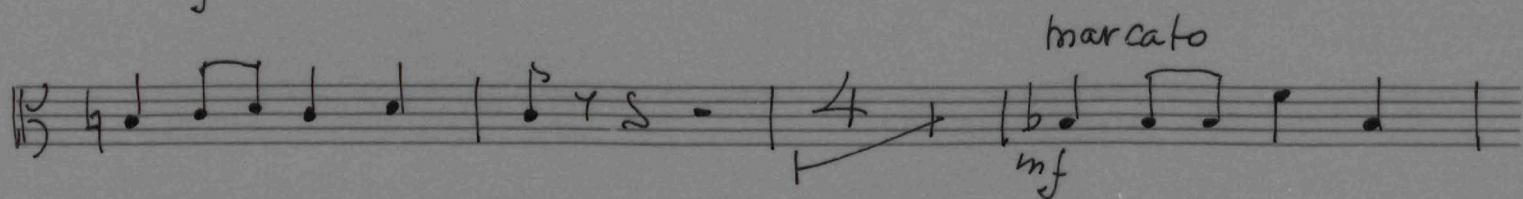
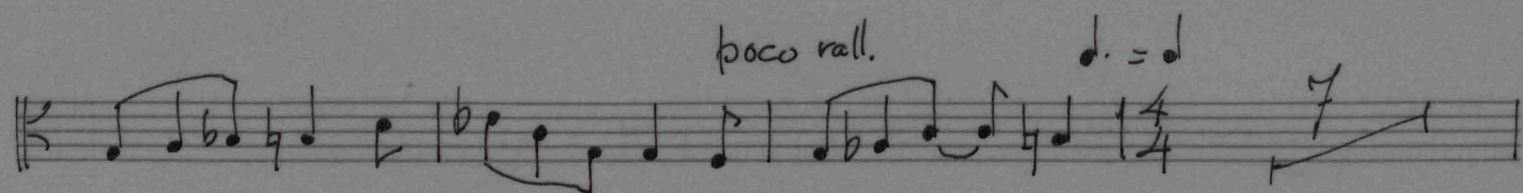
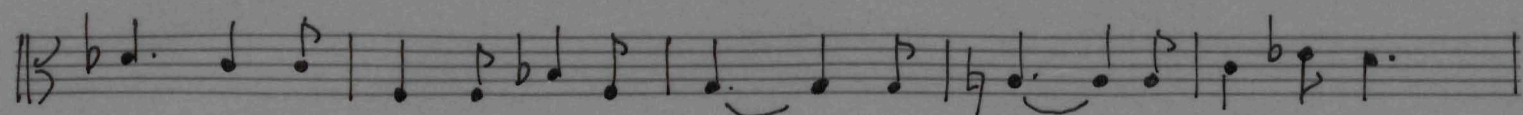
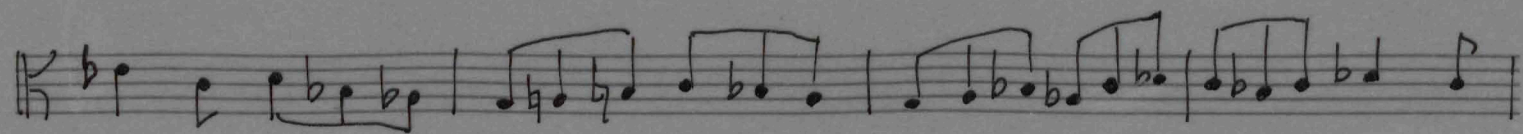
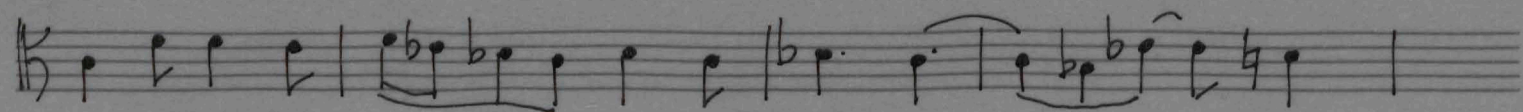
Handwritten musical notation for the first staff of 'The Rose Tree'. The key signature is B-flat major (two flats). The time signature is 4/4. The melody consists of the following notes: G4 (quarter), A4 (quarter), B-flat4 (quarter), A4 (quarter), G4 (half). The second measure contains a triplet of G4, A4, and B-flat4, followed by a half note G4. The third measure contains a triplet of G4, A4, and B-flat4, followed by a half note G4. The piece ends with a double bar line.

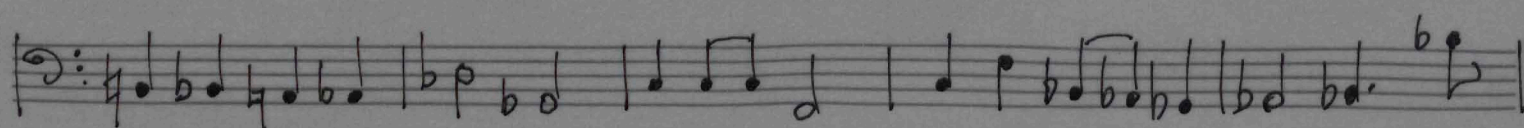
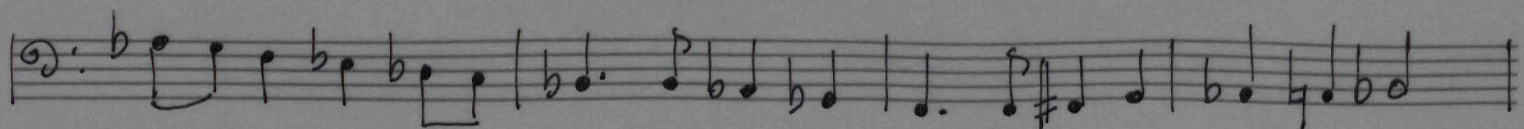
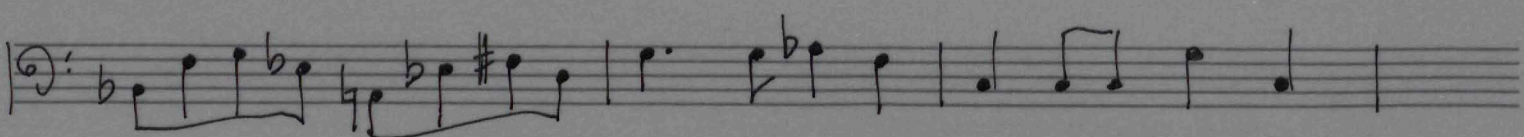
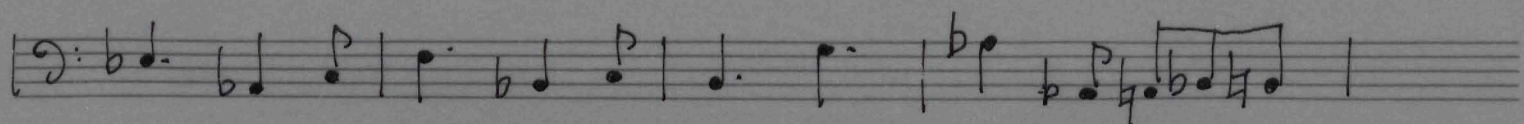
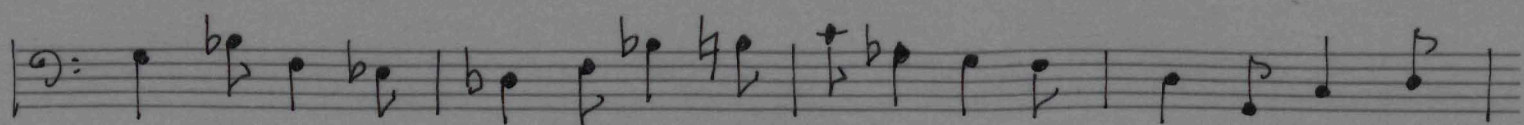
Handwritten musical notation on a five-line staff. The notation includes a key signature of one flat (B-flat), a common time signature (C), and various note values including quarter notes, eighth notes, and sixteenth notes. The piece concludes with a double bar line.

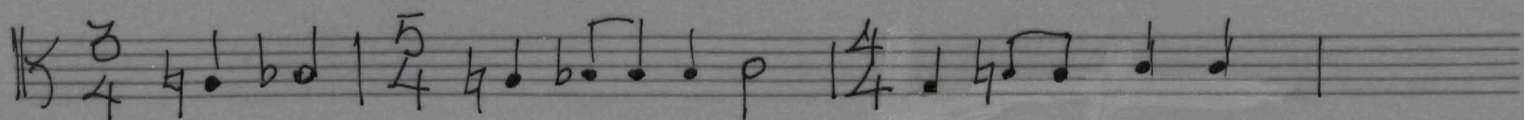
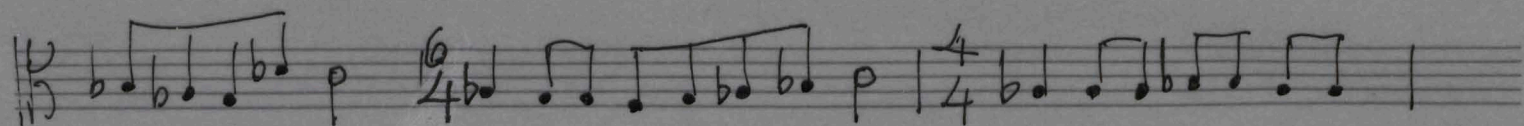
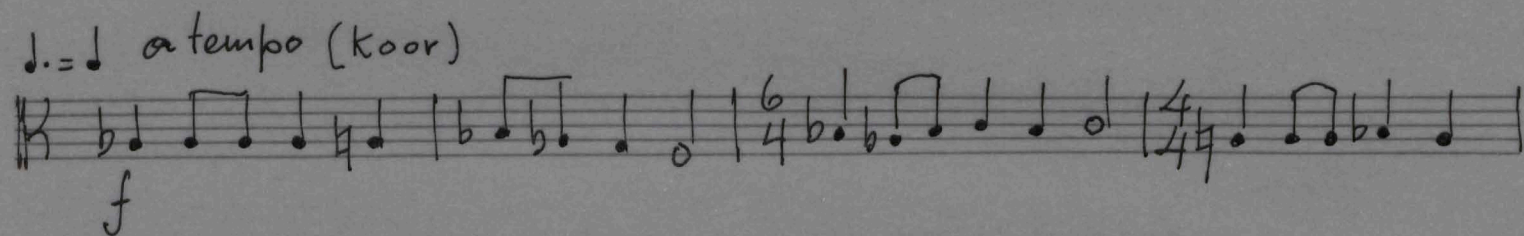
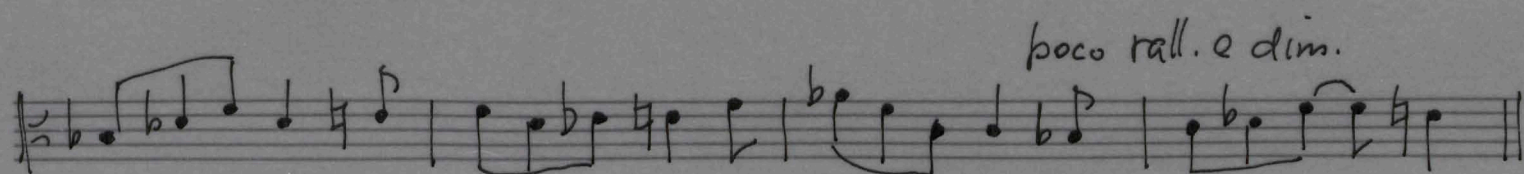
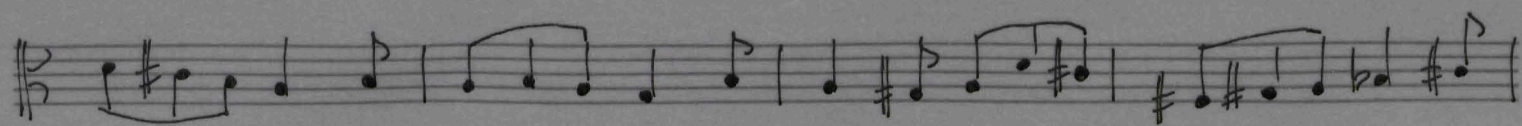
poco rall. $\text{!} = \text{!}$

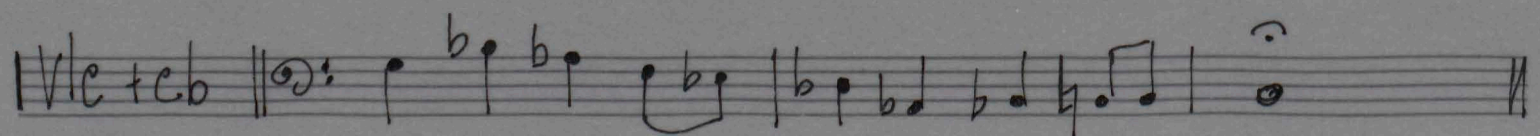


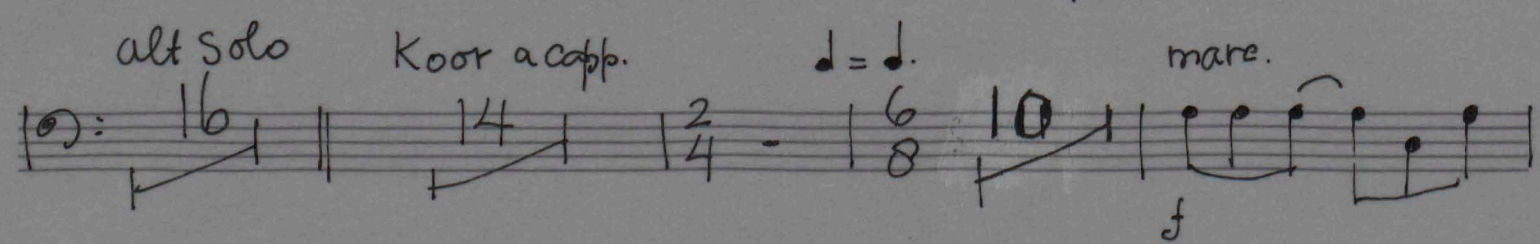
alt vl.

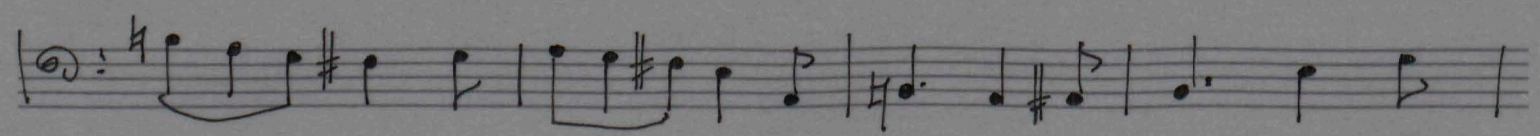


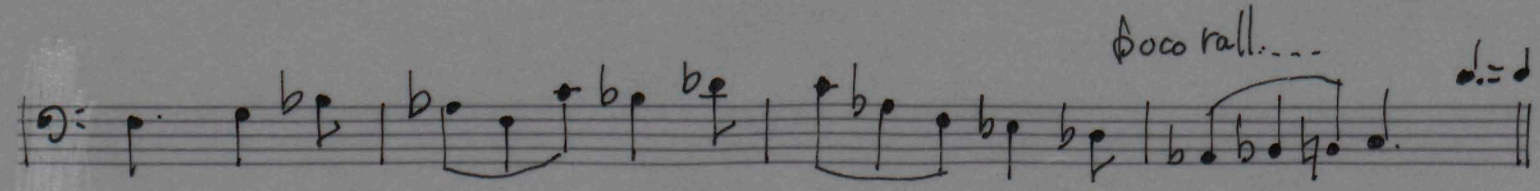


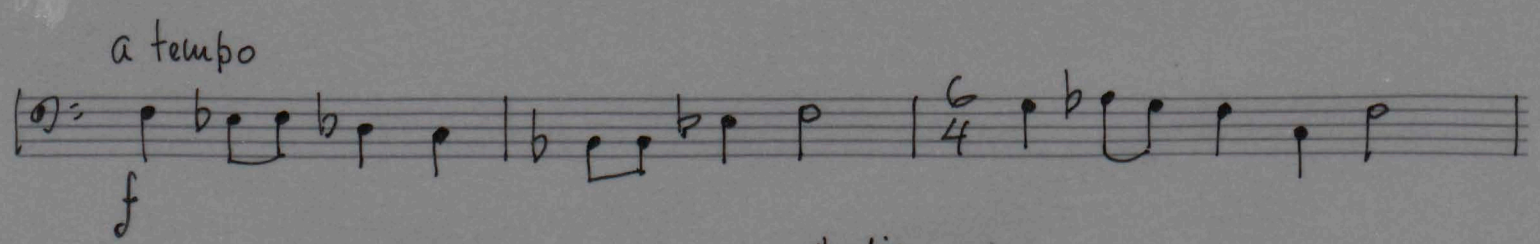


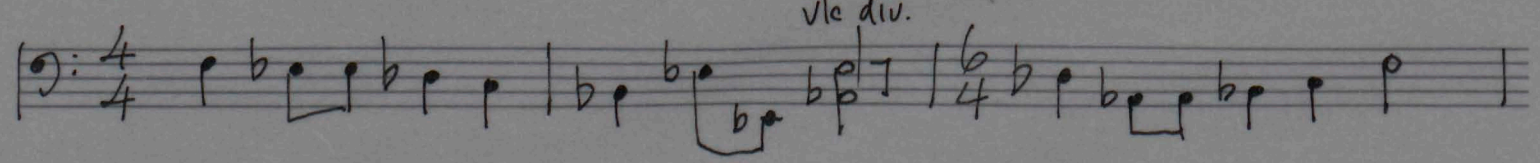
Vlc + Cb || 

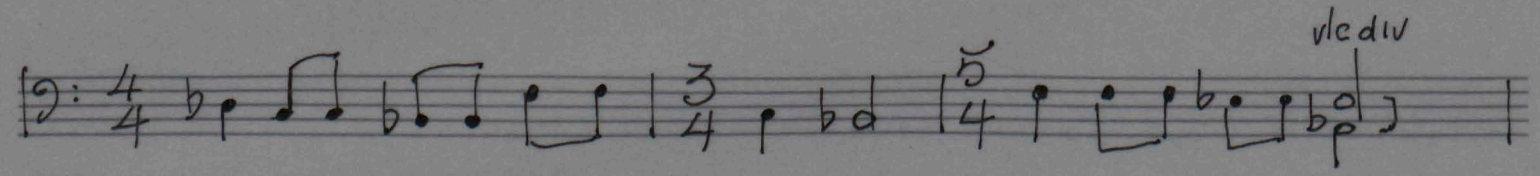
alt solo Koor a capp. ♩ = ♩. marc.
 





a tempo
 





molto allargando
 