

gloria laus

1998

♩ 54 poco rubato e espr.

S
A

T

B

o
r
g
a
n
o

10

4

10

4

Handwritten musical score for piano, featuring five staves. The first three staves are empty. The fourth staff contains a melodic line with a 'mp' dynamic marking. The fifth staff contains a bass line.

Glori-a laus et honor tibi sit, glori-a laus et honor tibi sit—

7
4 *mp*
Glori-a laus et honor tibi sit, Glo-ria laus et honor tibi sit—

7
4 *mp*
Glori-a laus et honor tibi sit, Glo-ria laus et honor tibi sit—

Glori-a laus et honor tibi sit, Glo-ria laus et honor tibi sit—

Handwritten musical score for piano, featuring five staves. The first three staves are empty. The fourth staff contains a melodic line with a '7' and '4' marking. The fifth staff contains a bass line.

crescendo..

Rex chri-ste Redemptor Cu-i pu-e-ri-le de-cus promp-

Rex chri-ste Redemptor Cu-i pu-e-ri-le de-cus promp-

Rex Chri-ste Re demptor cu-i pu-e-ri-le de-cus promp-

Rex chri-ste Redemptor Cu-i pu-e-ri-le de-cus promp-

Dim. Sit Hosanna pi-um.

Sit Ho-sanna pi-um.

Sit Ho-sanna pi-um.

Sit Ho-sanna pi-um.

dim.

f Is-ra-el es tu Rex, Da-⁵vi-dis et in-cli-na pro-les:

f Is-ra-el es tu Rex, Da-⁵vi-dis et in-cli-na pro-les:

dim

f

No-mi-ne qui in Domi-ni, ⁵₄ Rex be-ne-dicte ve-his.

No-mi-ne qui in Domi-ni, ⁵₄ Rex be-ne-dicte ve-his.

mf

Rex be-ne-dicte ve-nis

7 4 Rex be-he-dicte ve-nis. 4 4

7 4 Rex be-he di-cte ve-nis. 4 4

7 4 Rex be-he di-cte ve-nis. 4 4

caetus in excel - sis te laudet cae - lius

te laudet cae - lius

te laudet cae - lius

Handwritten musical score for "The Rose Tree" on three staves. The top staff is in treble clef with a key signature of two flats (B-flat and E-flat). The middle staff is in bass clef. The bottom staff is in bass clef and contains rests. The music is in 5/4 time. The first staff has a "dim--" marking above the first measure. The score is divided into four measures by vertical bar lines. The first measure contains a complex chordal melody. The second measure contains a simpler chordal melody. The third measure contains a complex chordal melody. The fourth measure contains a complex chordal melody. The bottom staff contains rests for the first three measures and a final measure with a double bar line.

om-his et mor-talis ho-mo, et $\frac{5}{4}$ cun-cta cre-a-ta si-mul

om-his et mor-talis ho-mo, et $\frac{5}{4}$ cun-cta cre-a-ta si mul

Empty musical staves for piano accompaniment.

Glori-a laus et ho-nor tibi sit — Rex Chri-ste Re-dem-p-tor

$\frac{7}{4}$ *mf* Glo-ri-a laus et ho-nor tibi sit $\frac{5}{4}$ Rex chri ste Re-dem-p-tor

$\frac{7}{4}$ *mf* Glo-ri-a laus et ho-nor tibi sit $\frac{5}{4}$ Rex chri ste Re-dem-p-tor

$\frac{7}{4}$ *mp*

$\frac{7}{4}$ *mp*

cresc. *dim.* Hosan-na pi-um

Cu-i pu-er-ri-le de-cus promp-⁵/₄ sit Ho-sanna pi-um—

cu-i pue-ri-le de-cus promp-⁵/₄ sit Ho-sanna pi-um

mp *mp*

⁵/₄ ⁵/₄

poco più mosso

mp Plebs He braea bi-bi Cum

mp Plebs He-braea ti—

mp

⁶/₄ ⁶/₄ ⁶/₄ ⁶/₄

$\text{♩} = \text{♩}$

4/4 palmis ob-via ve-⁵ nit: cum 8 prece, vo-to, hym-nis,

4/4 bi. cum 5 palmis ob-via venit: 6 cum 8 prece, vo-to, hym-nis,

a tempo

4/4 *ad sumus ec-ce ti-bi.* 4

4/4 *ad su-mus ecce, ec-ce ti-bi.* 4

mp

$\text{♩} = 72$

p Hi ti-bi pas-su-ro Sol-ve-bant mu-nia

p Hi ti-bi passu-ro

crescendo

lau-dis: Nos ti-bi reg-nan-ti *mf* bangimus ecce *ff* me-los

Nos ti-bi reg-nan-ti *mf* bangimus ecce *ff* me-los

cresc--

mf bangimus ecce *ff* me-los

mf bangimus ecce *ff* me-los

Sub. pp

come prima 54

Glo-ri-a laus et honor tibi sit

pan-gi mus, pangi mus, ecce me-los

Glo-ri-a laus et honor tibi sit

pan-gi mus, pangi mus ecce me-los

Glo-ri-a laus et honor tibi sit

Rex chri ste Re-dem-p-tor

Cu-i pu-e-ri-le

de-cus

promp-

4 - Rex chri ste Re-dem-p-tor

4 Cu-i pu-e-ri-le

de-cus promp-

4 - Rex chri ste Re-dem-p-tor

4 Cu-i pu-e-ri-le

de-cus promp-

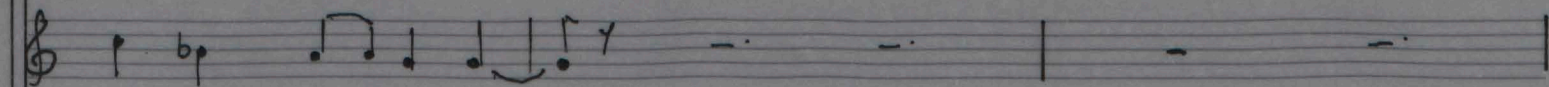
p. allargando

♩ = 54

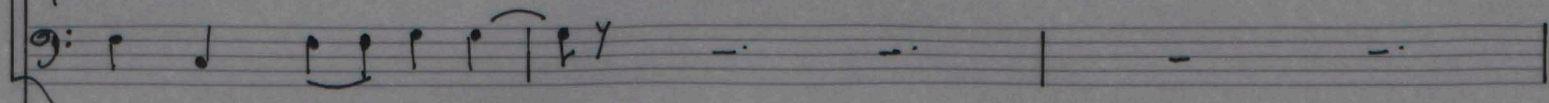
- sit Ho san-ha bi um -



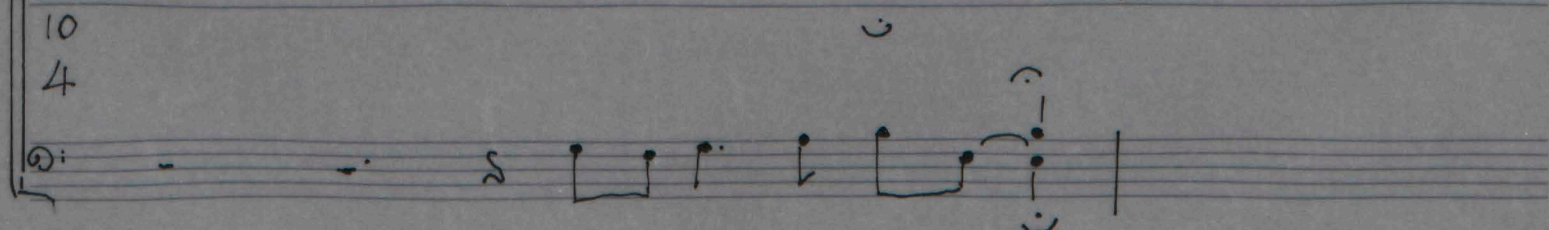
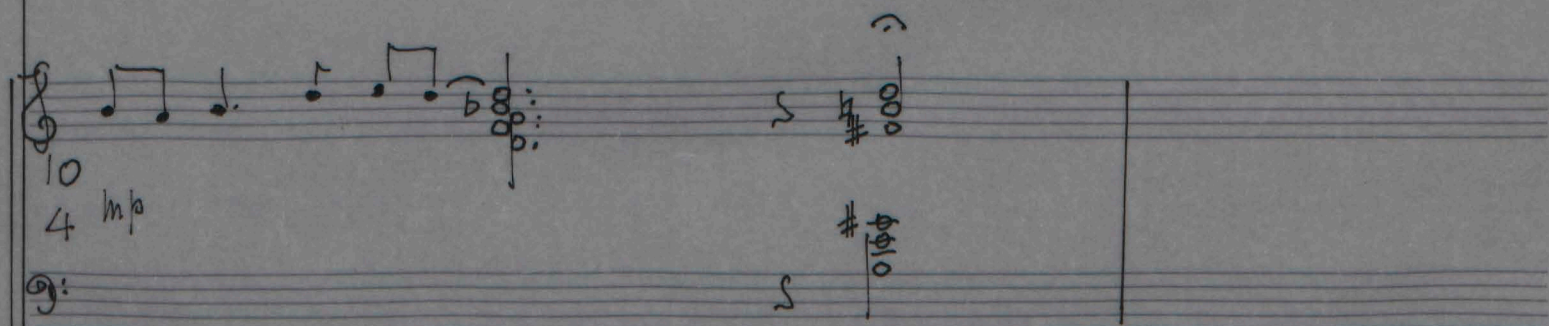
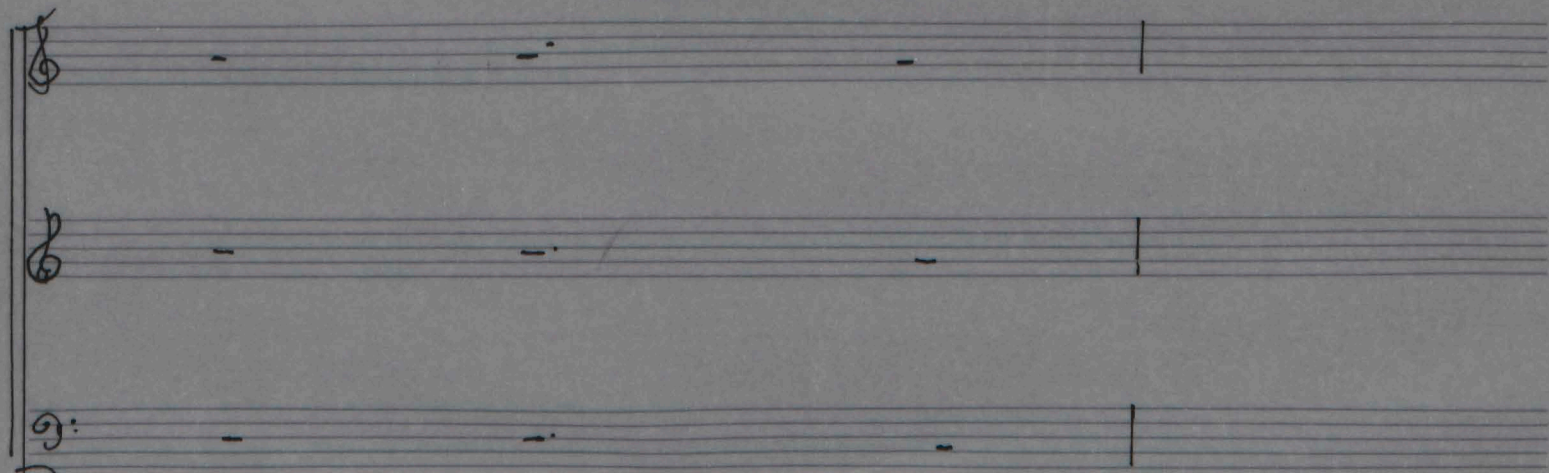
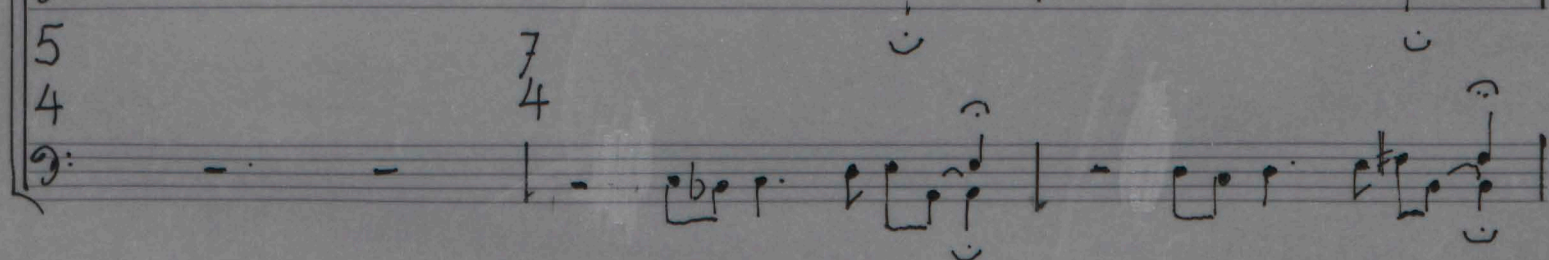
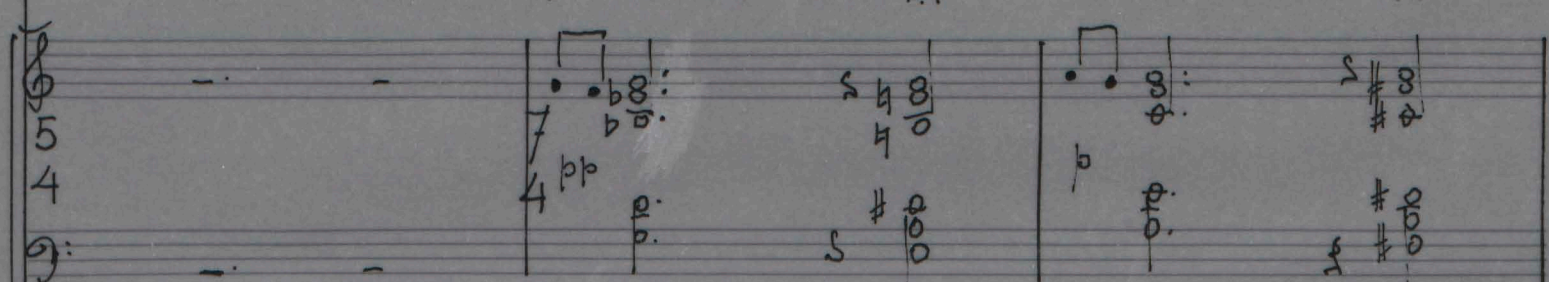
4 sit Ho - san ha bi-um -



4 Sit Ho - Sanna bi-um -



p. rub. e espr.



marcato

Hi pla-cu-e-re ti- bi place-at de-vo-tio nostra: pla-ce-

mf 4/4 *mf* Hi pla-cu-e-re ti-

4/4

4/4

4/4

4/4

4/4

4/4

4/4

4/4

at de-vo-tio no-stra pla-ce-at de-vo-tio

— bi pla-ce-at de-vo-tio no-stra de-vo- —

4/4

4/4

4/4

4/4

4/4

no — stra, place at, pla — ce — at, pla — ce —

tio no — stra, Hi pla — cu — e — re ti —

Hi placu — e — re ti — bi pla — ce — at de — vo — ti — o

Empty musical staves for piano accompaniment.

— at de — vo — ti — o no — stra.

bi, Hi pla — cu — e — re ti — bi pla — ce —

no stra pla — ce — at de — vo — ti — o

Hi pla — cu — e — re ti — bi pla — ce — at de — vo — ti — o

Empty musical staves for piano accompaniment.

bla - ceat de - vo - ti - o no - stra: Rex bo - ne, Rex cle - mens,
 - at de - vo - ti - o no - stra:

no - stra: pla - ceat de - vo - ti - o no - stra:

no - stra, de - vo - ti - o no - stra.

(Empty musical staves)

cui bo - na cuncta pla - cent Rex bo - ne, Rex

Rex bo - ne, Rex cle - mens

f Rex bo - ne, Rex cle - mens cui bo - na cuncta pla -

(Empty musical staves)

cle- mens cui bo- na cuncta pla-cent p. ritardando --- cui bona cuncta
 Rex bo- ne. Rex clemens cui bona cuncta pla-cent, cui bona cuncta
 Cui bo- na cuncta placent, bona cuncta pla-cent, cui bona cuncta
 cent, cui bo- na cui bo- na cuncta pla-cent Cui bona cuncta
 cresc.

pla-cent a tempo
 pla-cent mp Glo-ri-a laus, mf gloria laus f et honor ti-bi
 pla-cent. mp Glo-ri-a laus. mf gloria Laus f et honor ti-bi
 pla-cent et honor ti-bi

cu - i pu - e - ri - le de - cus promp -

6 sit Rex christe Redemptor: 4 cu - i pu - e - ri - le de - cus promp -

6 sit Rex christe Redemptor: 4 cu - i pu - e - ri - le de - cus promp

meno mosso sit Ho - san - na *dim e sostenuto* pi - um, *allargando* Ho - san - na

3 sit Ho - san - na 4 pi - um, 6 Ho - san - na

3 sit Ho - san - na 4 pi - um — 6 Ho - san - na

Sit Ho san ha pi - um Ho - san - na

[illegible]

