

REJOICE IN THE LORD ALWAYS

George Rathbone

Orkest bew: Otto Deden

Bariton, Bas clarinet

Handwritten musical score for the first system. It consists of two staves. The top staff is for Bariton/Bas clarinet, and the bottom staff is for Tenor Sax. Both staves are in 4/4 time. The key signature has one sharp (F#). The music begins with a forte (f) dynamic. The Bariton/Bas clarinet part has a melodic line with eighth and quarter notes. The Tenor Sax part has a similar melodic line. The system ends with a 'coro' (chorus) section marked with a dash.

(A) Ten. sax, BAR, Bas cl.

Handwritten musical score for the second system, labeled (A). It is a single staff in 4/4 time, featuring a melodic line with eighth and quarter notes. The system begins with a 3-measure rest.

Handwritten musical score for the third system, labeled (B). It is a single staff in 4/4 time, featuring a melodic line with eighth and quarter notes. The system begins with a 3-measure rest.

Handwritten musical score for the fourth system, labeled (C). It is a single staff in 4/4 time, featuring a melodic line with eighth and quarter notes. The system begins with a 4-measure rest.

Handwritten musical score for the fifth system, labeled (D). It is a single staff in 4/4 time, featuring a melodic line with eighth and quarter notes. The system begins with a 4-measure rest.

Handwritten musical score for the sixth system, labeled (E) and (F). It is a single staff in 4/4 time, featuring a melodic line with eighth and quarter notes. The system begins with a 3-measure rest. The key signature changes to two sharps (F# and C#). The system ends with a 'coro' (chorus) section marked with a dash.

2 (G) Dal segno (A)
Coda

Handwritten musical score for the seventh system, labeled (G). It is a single staff in 4/4 time, featuring a melodic line with eighth and quarter notes. The system begins with a 3-measure rest. The dynamic is marked 'ff marcato'.

Empty musical staff.

Empty musical staff.

Empty musical staff.

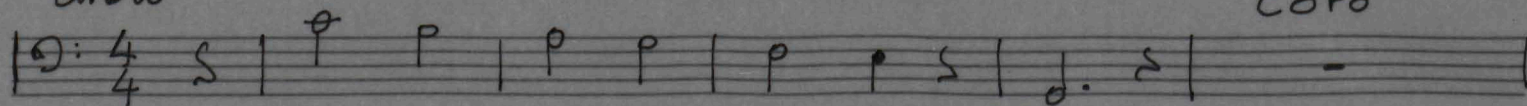
REJOICE IN THE LORD ALWAYS

George Rathbone

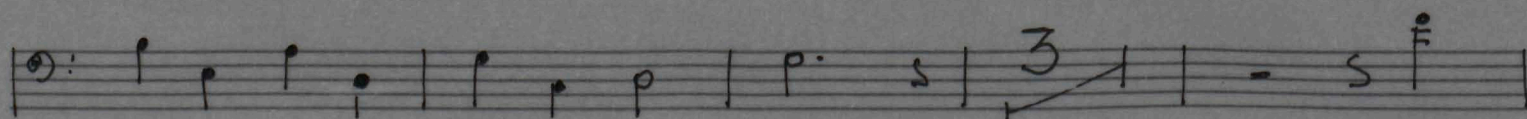
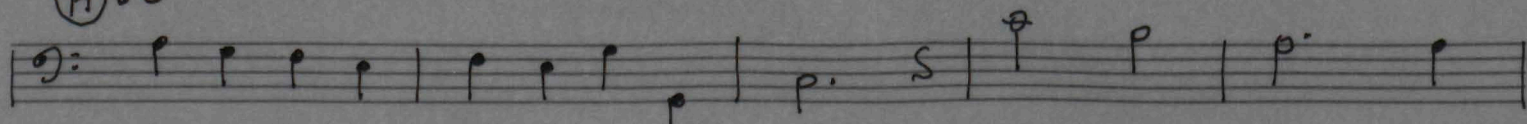
Orkestbew: Otto Deden

tuba

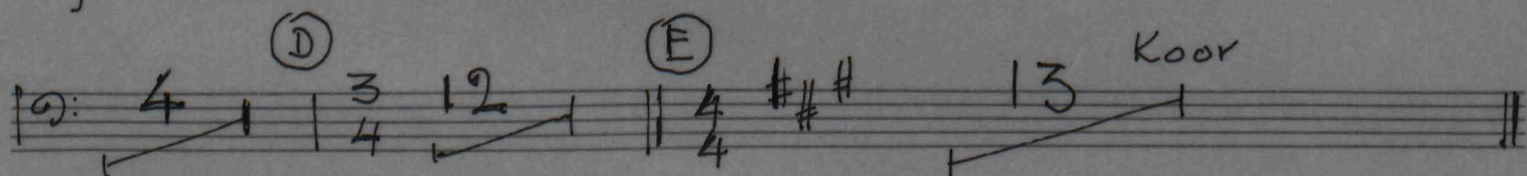
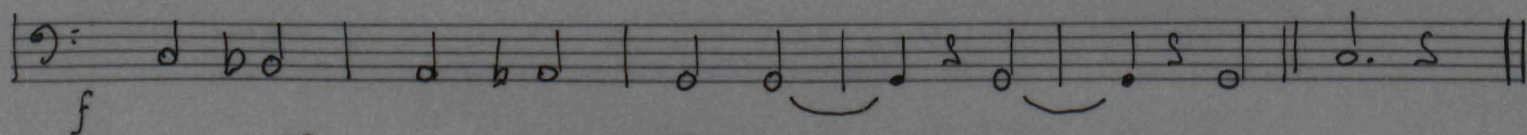
Coro



(A) ~



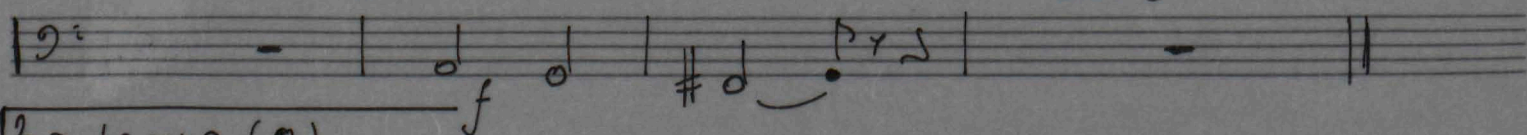
1



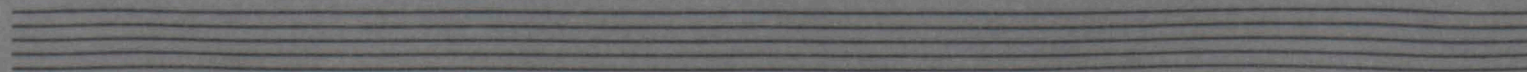
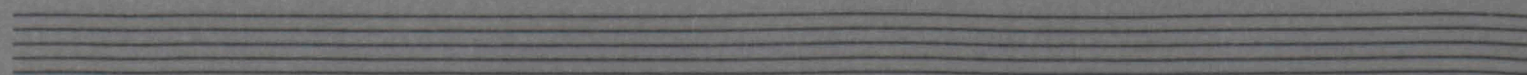
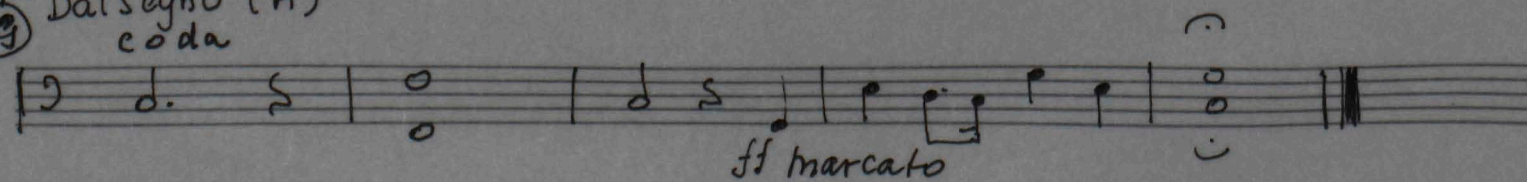
Koor

(F)

Coro



2
Dal segno (A)
coda

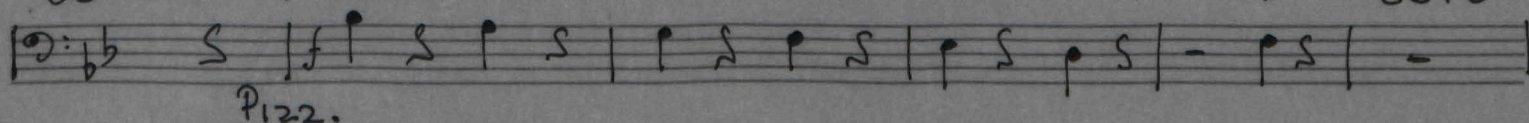


REJOICE IN THE LORD ALWAYS

George Rathbone
Contrabasso, Bass, Es Bass

Orkesterbew: Otto Deden

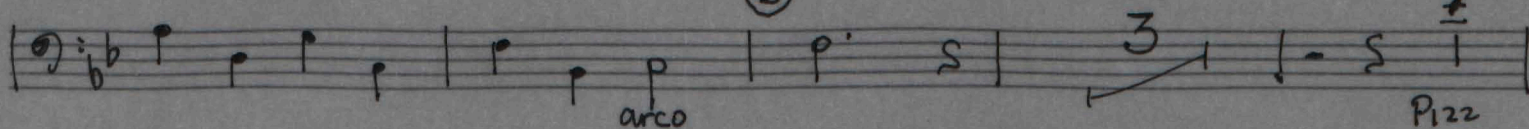
> coro



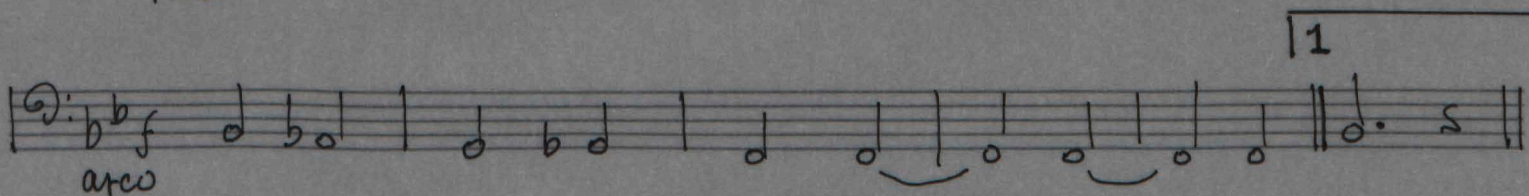
(A) ∞



(B)

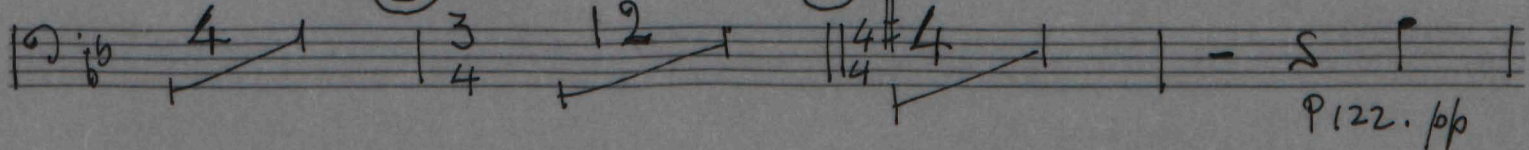


(C)

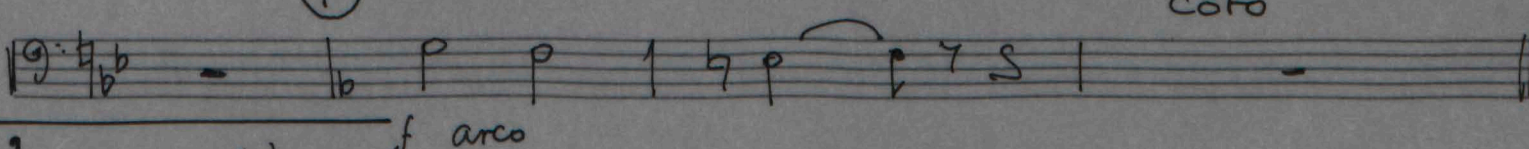


(D)

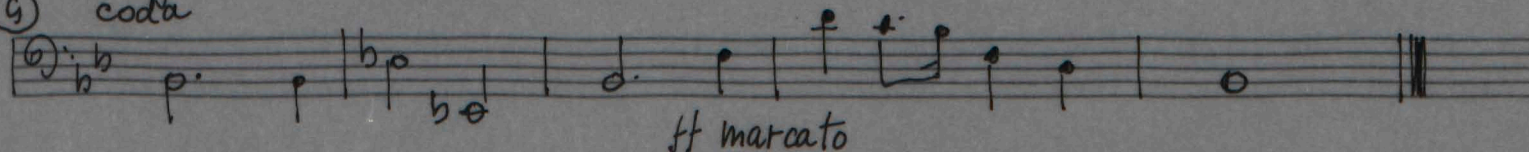
(E)



(F)



2 Dal Segno (A)
coda



REJOICE IN THE LORD ALWAYS

George Rathbone

Orkest bew: Otto Dedes

1 A 2 *tummm* (B)

Pauken

tamb pice

triangel

gr tr.

Bekken

(C)

1 (D) (E)

triang:

Koor (F)

2 Dal segno (A) e poi coda

Koor (G)

tummm

f

pomp

REJOICE IN THE LORD ALWAYS

George Rathbone

Orkest bew: Otto Dedden

fagot 1,2

Coro


fagot 1,2

coro

Handwritten musical notation for the second system of 'The Rose Tree'. The key signature is one flat (B-flat) and the time signature is 4/4. The melody is written on a single staff. The notation includes various note values (quarter, eighth, and sixteenth notes), rests, and accidentals. A circled 'B' is written above the staff, indicating a B-flat. The piece concludes with a double bar line.

Handwritten musical notation for the first system of 'The Rose Tree'. The notation is on a single staff with a treble clef and a key signature of one flat (B-flat). The melody consists of the following notes: G4 (quarter), A4 (quarter), Bb4 (quarter), A4 (quarter), G4 (quarter), F4 (quarter), E4 (quarter), D4 (half). The piece ends with a double bar line.

[illegible][illegible][illegible][illegible]

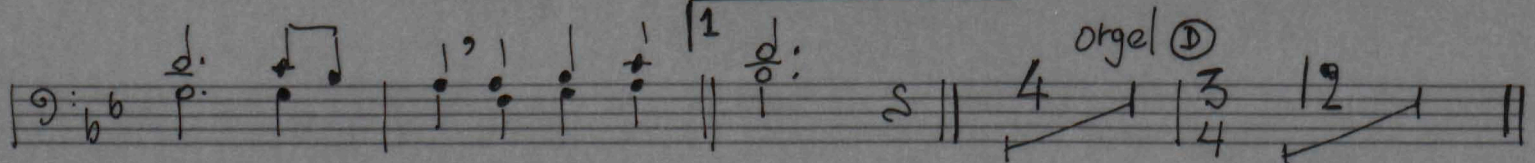
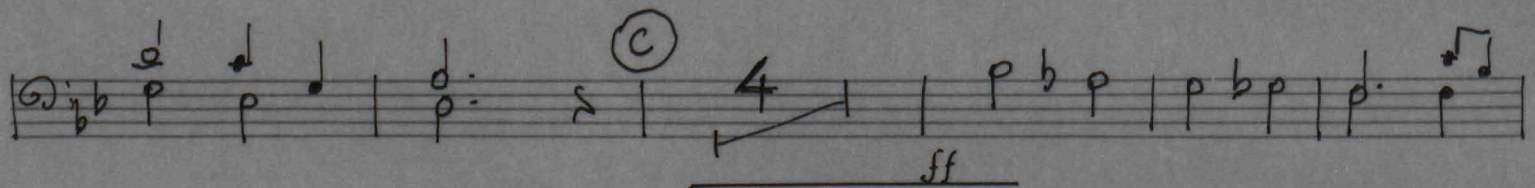
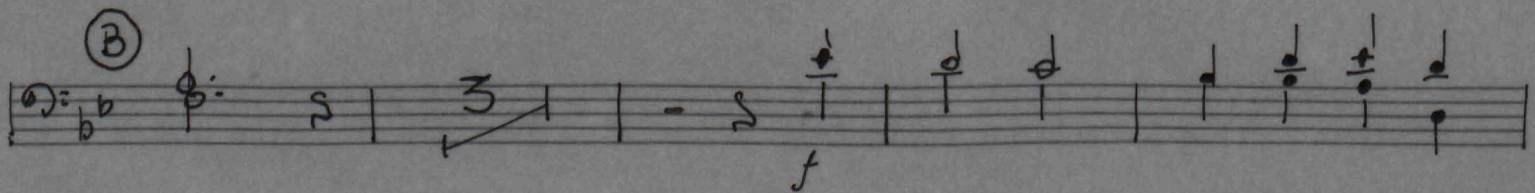
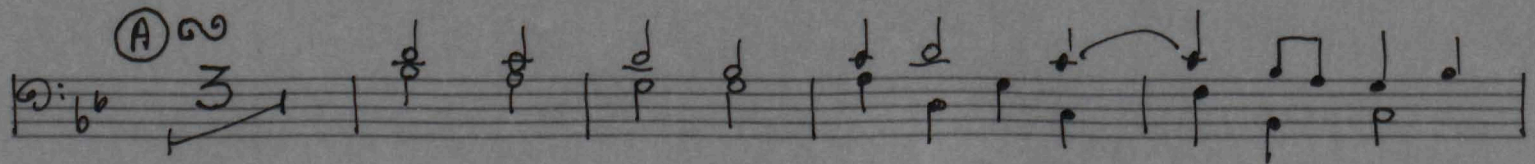
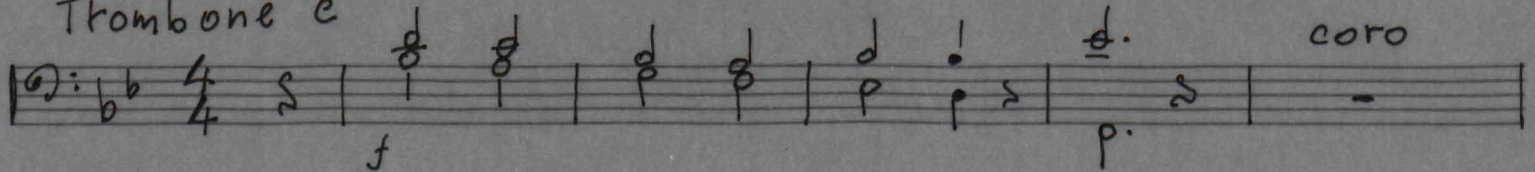
2 Dal segno (vanaf (A))
 (G) e poi coda 
 ff marcato

REJOICE IN THE LORD ALWAYS

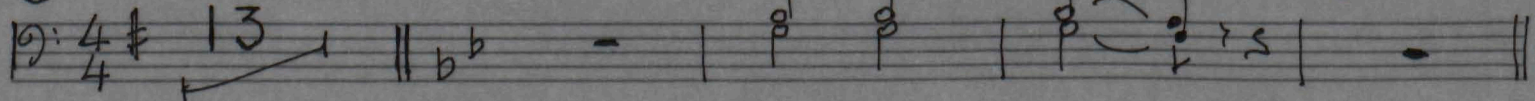
George Rathbone

orkest bew: Otto Deden

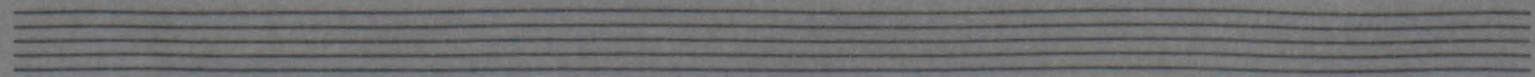
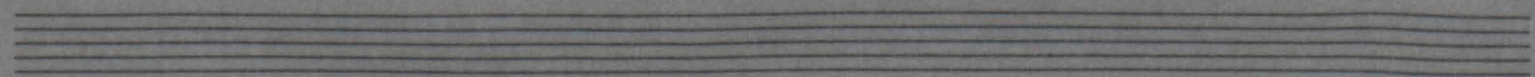
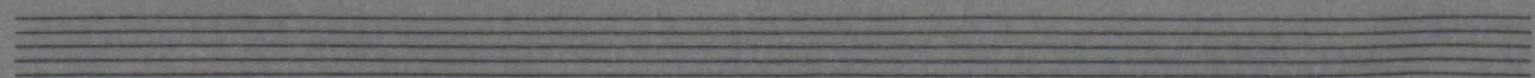
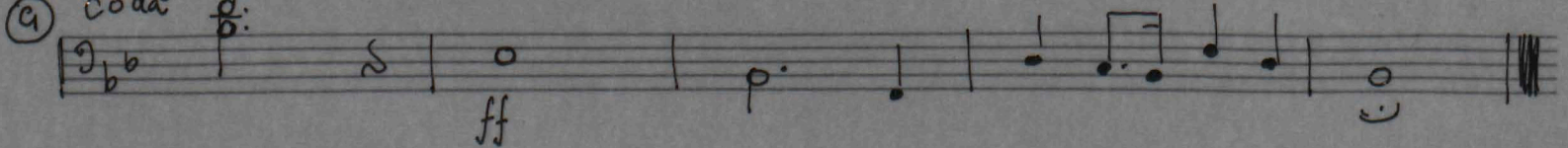
Trombone c



(E) tranquilo Koor



(G) 2 Dal segno (A)
Coda

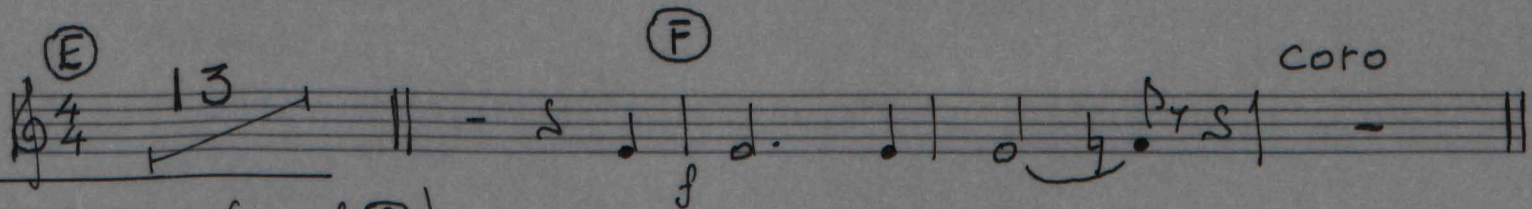
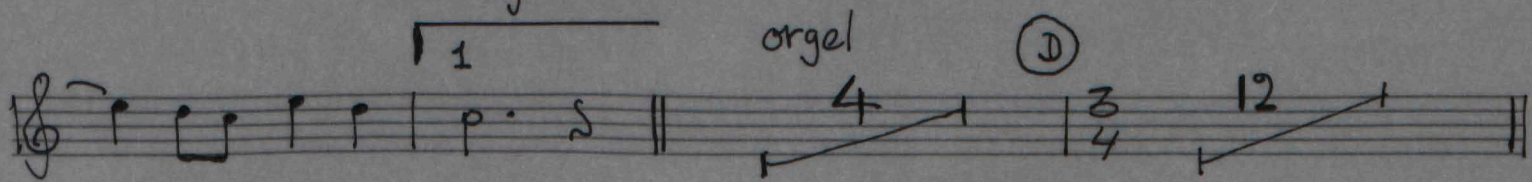
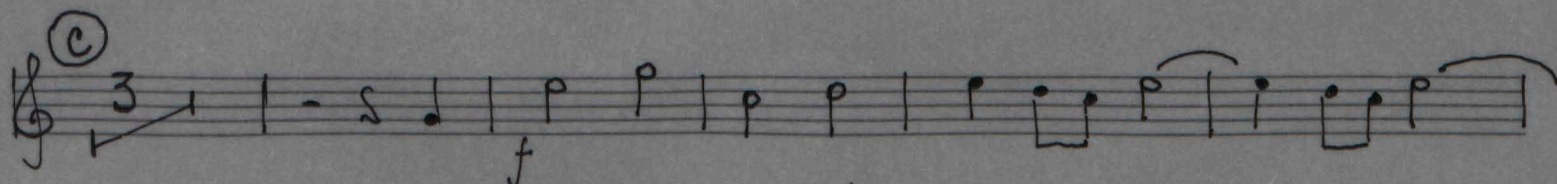
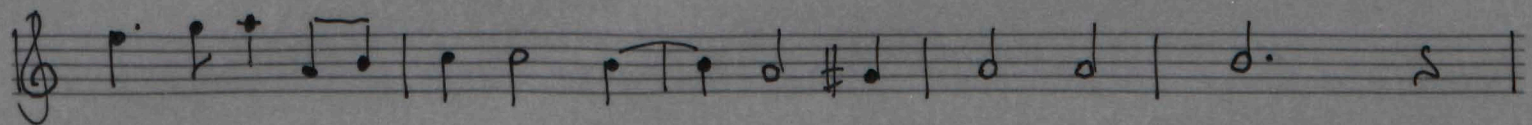
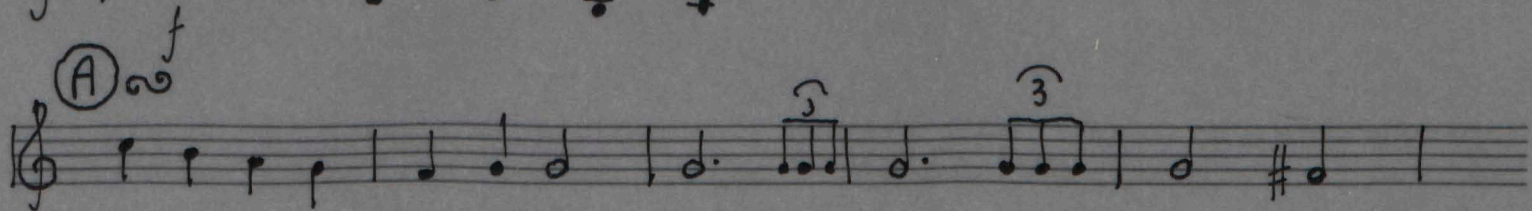
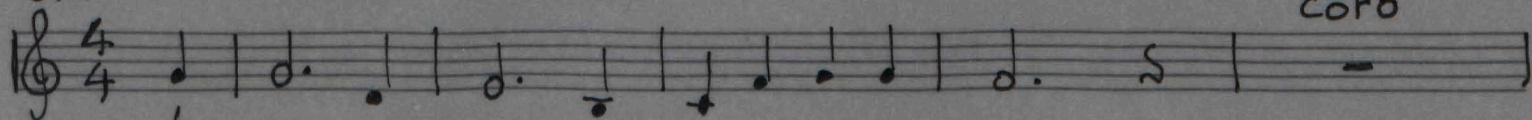


REJOICE IN THE LORD ALWAYS

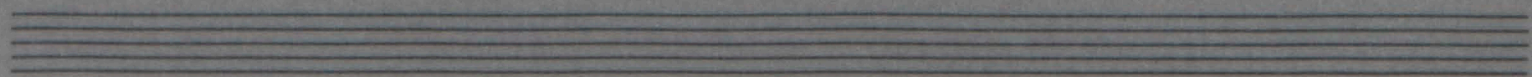
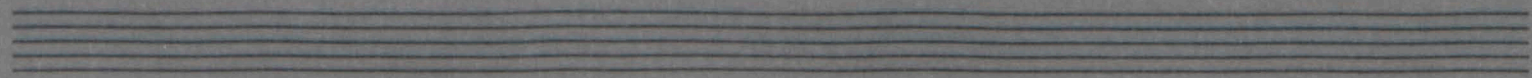
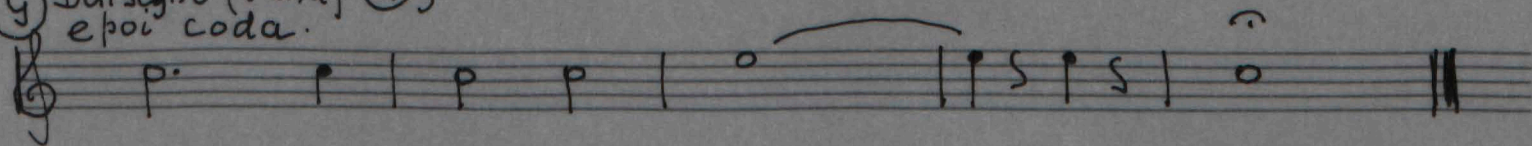
George Rathbone
clarinet 3

orkestbew: Otto Deden

coro



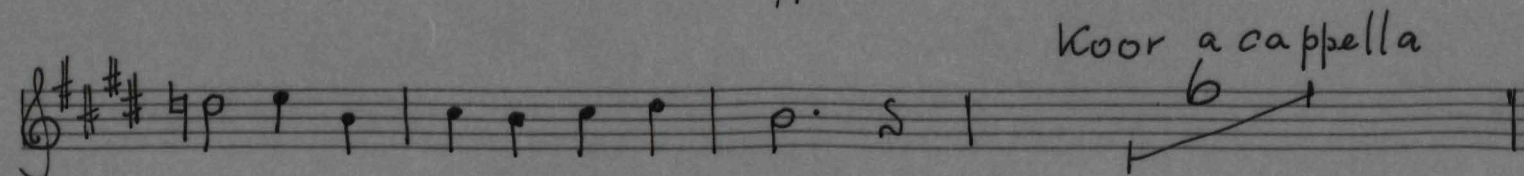
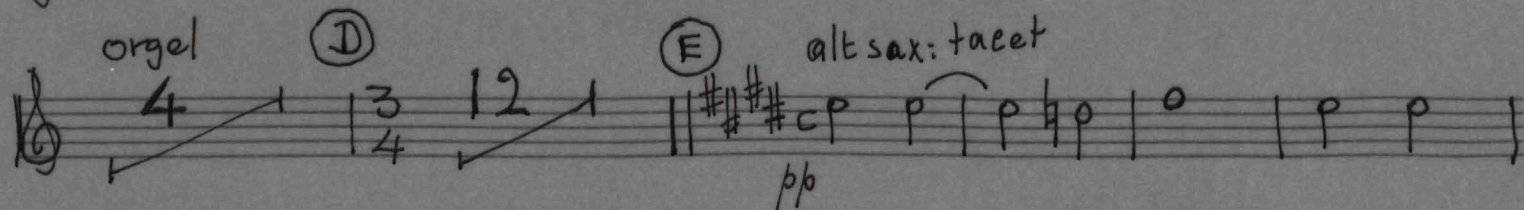
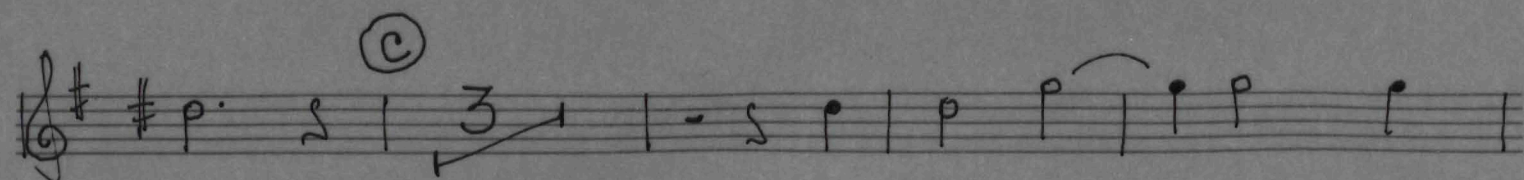
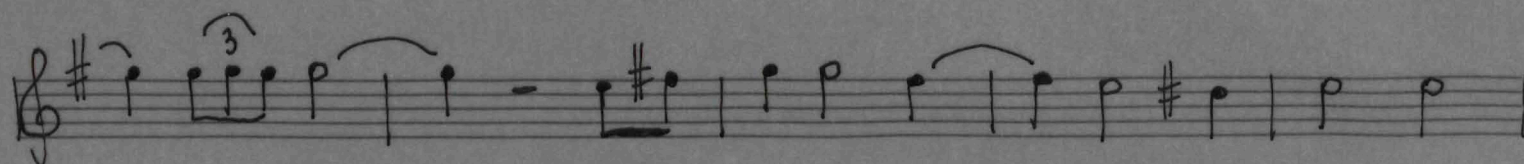
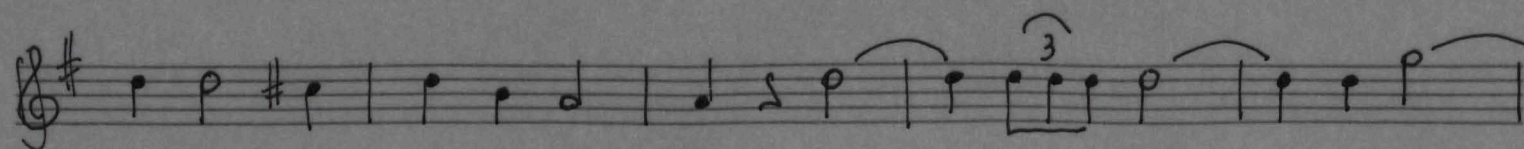
12 Dal segno (vanaf A)
epoi coda.



REJOICE IN THE LORD ALWAYS

George Rathbone
alt Sax; Hoorn.

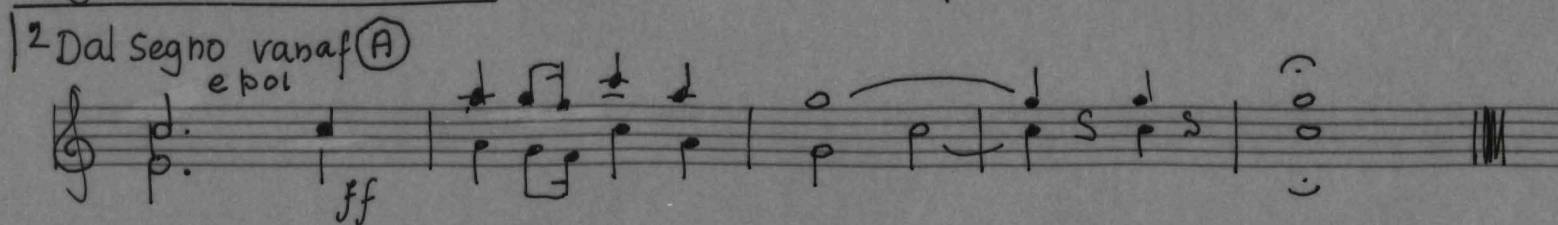
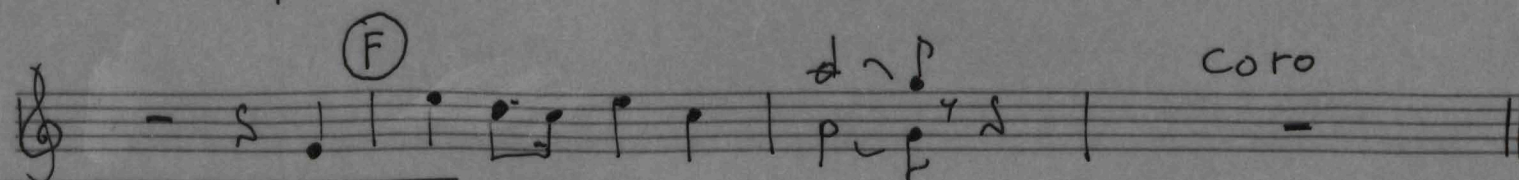
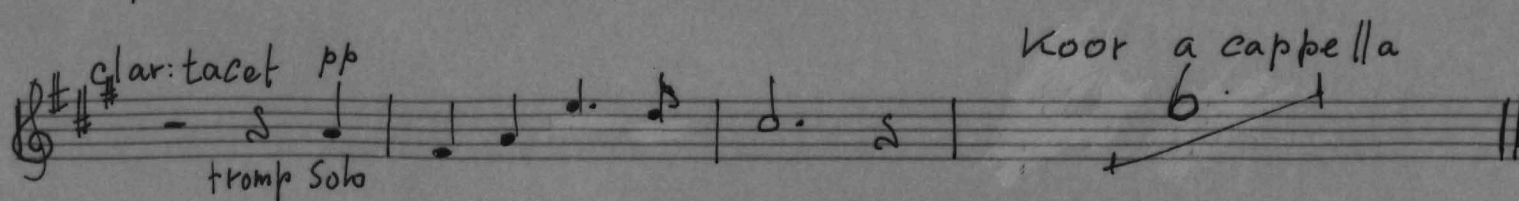
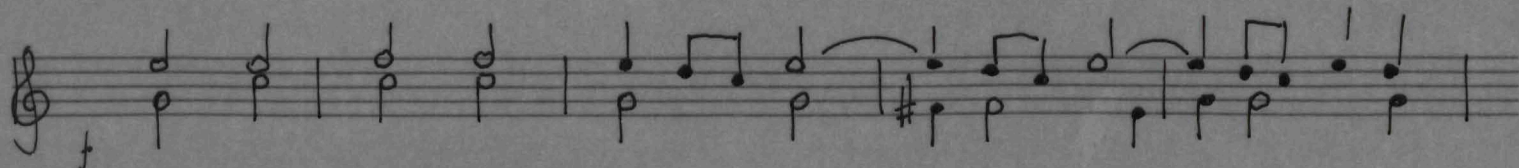
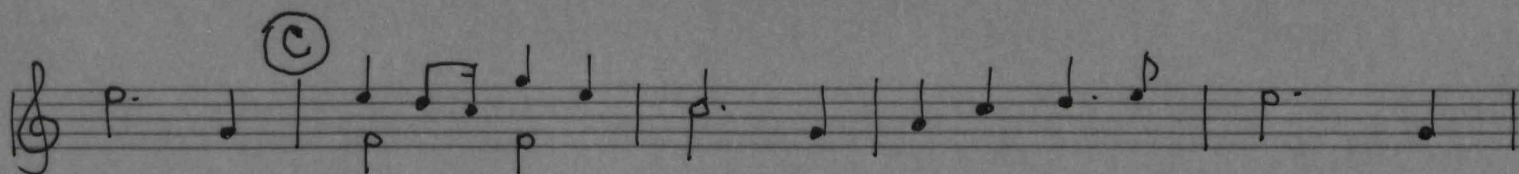
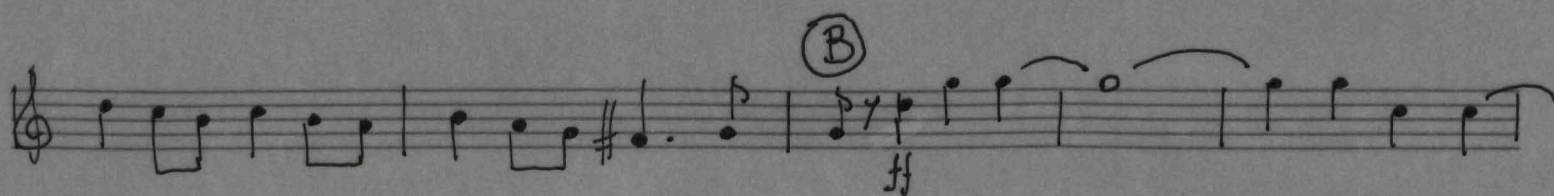
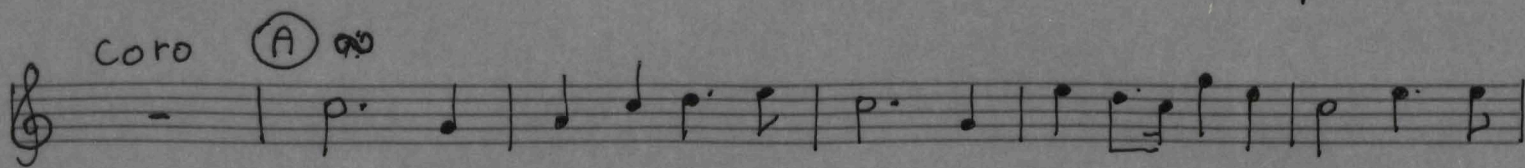
orkestbew: Otto Deden



REJOICE IN THE LORD ALWAYS

George Rathbone
clarinet 1.2 ; trumpet

orkest bow: Otto Deden



REJOICE IN THE LORD ALWAYS

George Rathbone

— orkestbew: Otto Deden 86

fluit 1, 2; ob 1, 2

f ob II

fl. ob.

fl. + ob

coro (A)

(B)

(C)

Orgel (D) meno mosso

(E) ob: tacet Tranquilo

Koor

coro (G) Dal segno e poi

vanaf (A)