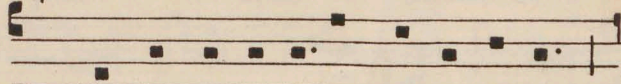


Part. s.v.p. retour

OTTO DEDEN

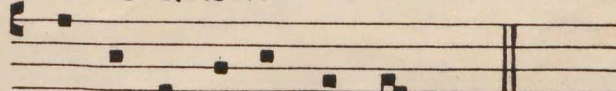
♦ MISSA ♦
ATTENDE
DOMINE

Kyrie Benedictus



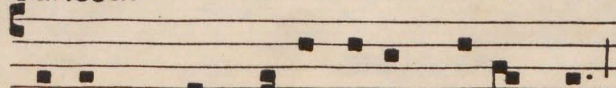
At-tén-de Dó-mine, et mi-se-re-re,

Christe eleison



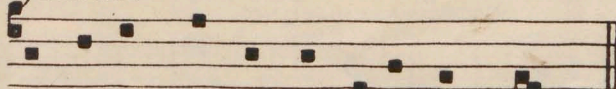
qui-a pec-cá-vi-mus ti-bi.

Sanctus



Ad te Rex summe ómni-um Redemptor,

hosanna



exaudi Christe, supplicantium preces

UITGAVE ANNIE BANK - AMSTERDAM - DED. 25



MISSA ATTENDE DOMINE

Otto Deden. 1958

mm $\text{♩} = 48$

5

T

B

mp

Ky - ri - e e - lei - son, e - lei - son, e -

mp

Ky - ri - e e - lei - son, e - lei - son, e -

Kyri-e e-lei-son, e-lei-son,

lei - son. Ky - ri - e e - lei - son, e -

mf

lei - son, Ky-ri-e e-lei-son e-lei-son,

Ky - ri - e e - lei - son, e - lei -

- lei - son, e - lei-son, Ky - ri - e e -

10

mf

Ky - ri - e e - lei-son, e -

son, e-lei - son, e-lei - son, Ky - ri - e e -

lei-son, e - lei - son, Ky - ri - e

13

f

lei - son, Ky - ri - e e-lei -

lei-son, e-lei - son, e -

e-lei-son, Ky - ri - e e - lei - son, e - lei -

15/ allargando e

son, e-lei - son, e - lei - son, e - lei - son, Ky - ri -

lei - son, e - lei - - son, e - lei - - son, -

- - son, e - lei - - son, e-lei -

19/ *diminuendo*

mf

- e - lei - son. Christe e - lei - son, e - lei - son. Chri - ste e - lei - son.

23

The handwritten musical score consists of four staves. The first staff is for Soprano, the second for Alto, and the third for Bass. The fourth staff is for basso continuo. The music is written in G major (one sharp) and common time. The lyrics are written below each vocal staff. The Soprano part has two lines of lyrics. The Alto and Bass parts have one line of lyrics. The basso continuo part has one line of lyrics.

Son, e-lei - son, e-lei - son, e - lei -
son, e - lei - son, e - lei - son, e -
Chri-ste e-lei - son, Christe e-lei -

29

son, Christe e-lei- son, e - lei - son, Chri- ste e-lei -

lei - son, Christe e - lei - son, Christe e - lei - son, — e -

son, e - lei - son, Christe e-lei - son, e - lei -

29. *allargando e diminuendo* Kyrie da capo

son. Chri-stee-lei - son, e - lei - son.

lei - son, e - lei - son, e - lei - son.

son, e - lei - son, e - lei - son. Ky-ri-e e -

SANCTUS

mf

S San - ctus, San - ctus, San - - - ctus,

T San - - - ctus, San - ctus, San - ctus,

B *mf* San - - - ctus, San - ctus, San - - ctus Do-

5

Do - mi - nus De - us Sa - - - ba -

Do - mi - nus De - us Sa - - - ba -

mi - nus De - us Sa - ba - oth, Sa - - ba -

8 *mp poco mosso*

oth. Ple - ni sunt cae - li et ter - ra, et ter -

oth. *mp* Ple - ni sunt cae - li et ter -

oth.

ra glo - ri - a tu - a, glo - - - ri -

ra, et ter - ra glo - - - ri - a, glo - ri - a

mp Ple - ni sunt cae - li et ter - - - ra glo - ri - a

14 *poco rall* *f* *atempo*

a — tu — a. Ho-san-na in — ex-cel — sis.

tu — a. Ho-san — na, Ho — san

tu — a. Ho-san-na in ex-

17

Ho-san-na in — ex-cel — sis.

na in ex-cel — sis, in ex-cel — sis.

cel — sis, in ex-cel — sis.

BENEDICTUS

5 *p*

Be-ne-di - ctus qui ve - nit, qui ve - nit,

T *p*

Be-ne-di - ctus qui ve - nit qui ve -

B *p*

Be-ne-di - ctus qui

4 *mp*

— qui ve - nit in no-mi-ne Do-mi-ni. Be-ne-di -

mf *mf*

nit in no - mi-ne Do-mi-ni. Be-ne-di - ctus qui

ve - nit in no - mi - ne, in no - mi-ne Do -

7/ *mf*
 - ctus qui ve - nit in no-mi - ne, in no-mi-ne
 ve - nit in *mf* no - mi - ne, in no - mi - ne, in
 mi - ni.

10/ *Be-ne-di-ctus qui ve-nit in no-*
rall e dim. a tempo
 Do-mi-ni in no-mi - ne Do - mi - ni. Ho-san-na in -
 no - mi - ne — Do - mi - ni. Ho-san-
 mi - ne Do - mi - ni.

13/ *rallentando dim.*
 — ex-cel - sis, Ho-san-na in — excel - sis.
 na, Ho - san - na in ex - cel - sis, in ex-cel - sis.
 Ho-san-na in ex-cel - sis, in ex-cel - sis.

agnus Dei

mf
 S A-gnus De - i, qui tol-lis pecca-
 T A - gnus De - i, qui tol-lis pec-ca - ta - mun-di
 B *mf*

Agnus De-i, A - gnus De - i qui
poco rall II
 ta - mun - di mi-se-re-re no-bis.
 mi-se-re-re no - bis, mi-se-re-re no-bis.
 tol - lis peccata mun - di, mi-se-re-re no-bis. A - gnus

7 *atempo*
mp

A-gnus De-i, qui tol - lis - peccata mun - di,
A - gnus De - i qui tol - lis, qui tol -
De - i qui tol - lis pec - ca - ta mun - di, qui

10 *mf*

qui tol - lis pec - ca - ta mun - di, mi - se -
lis pecca - ta mundi, mi - se - re - re - re - re
tol - lis peccata mundi, mi - se - re - re no -

13 *diminuendo* *III mf*

re - re no - bis. A - gnus De - i, A - gnus De -
no - bis. A - gnus De - i qui tol - lis pec - ca - ta
bis. A - gnus De -

16

iqui tol - lis pecca - ta mun - di, do - nano - bis
mun - di, qui tol - lis pec - ca - ta mun - di, do - na no - bis, do - na
i qui tol - lis qui tol - lis pec - ca - ta mun -

19 *molto rallen tando e diminuendo*

pa - cem, do - na no - bis pa - cem.
nobis pa - cem, do - na no - bis pa - cem.
di, do - na nobis pa - cem.

